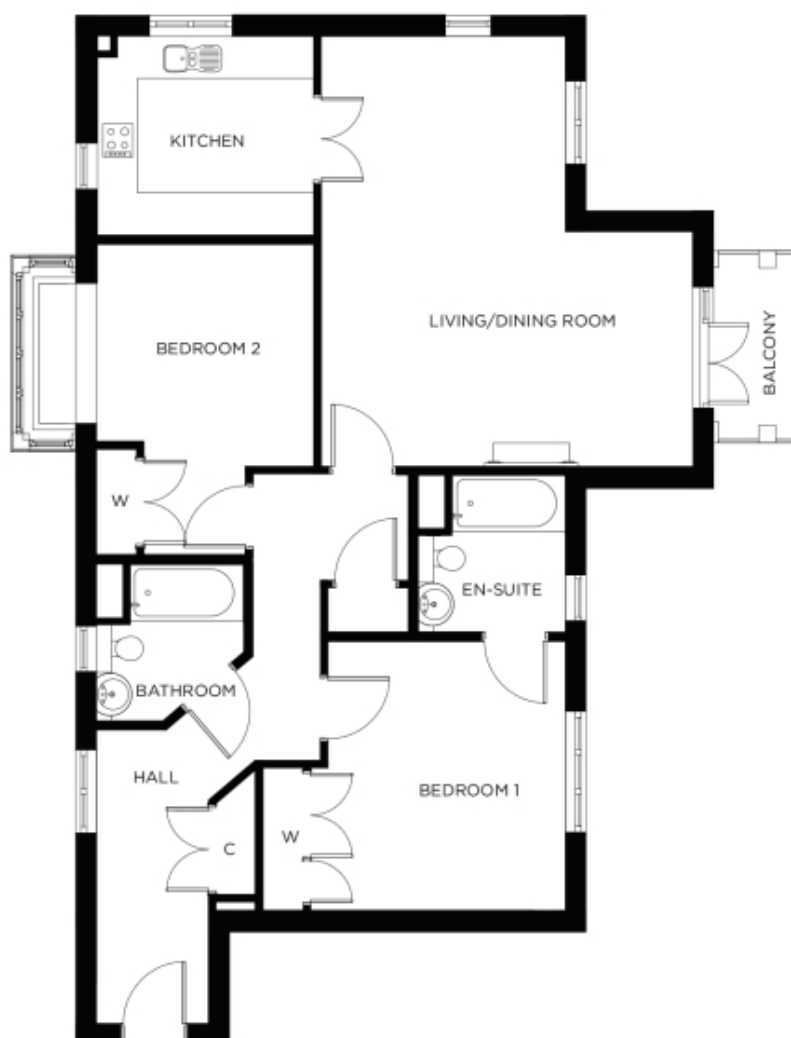


4 Cooper Manor

A beautiful modern home



Price: £556,000*, First floor

This beautiful apartment features a versatile open plan living space adjacent to the fully-equipped kitchen. An en-suite master bedroom is supplemented by a second double-bedroom and separate bathroom, giving the flexibility to entertain guests all year round.

* other charges apply

Internal measurements: 1,117sq ft

Kitchen	10' 9" x 10' 1"	3,270 x 3,050mm
Living/Dining Room	21' 4" x 18' 3"	6,480 x 5,560mm
Bedroom 1	15' 2" x 10' 10"	4,610 x 3,280mm
Ensuite	8' 0" x 6' 9"	2,430 x 2,050mm
Bedroom 2	13' 0" x 12' 6"	3,960 x 3,810mm
Bathroom	8' 0" x 6' 9"	2,430 x 2,050mm

Apart from the fixtures and fittings described, the homes are unfurnished.

* Based on a 125-year lease, and subject to service charge, event fees and ground rent. Please ask for further information.

Version 3 - 19/10/2018



PLEASE NOTE: Images are for illustrative purposes only. Rooms shown may not be representative of this property.