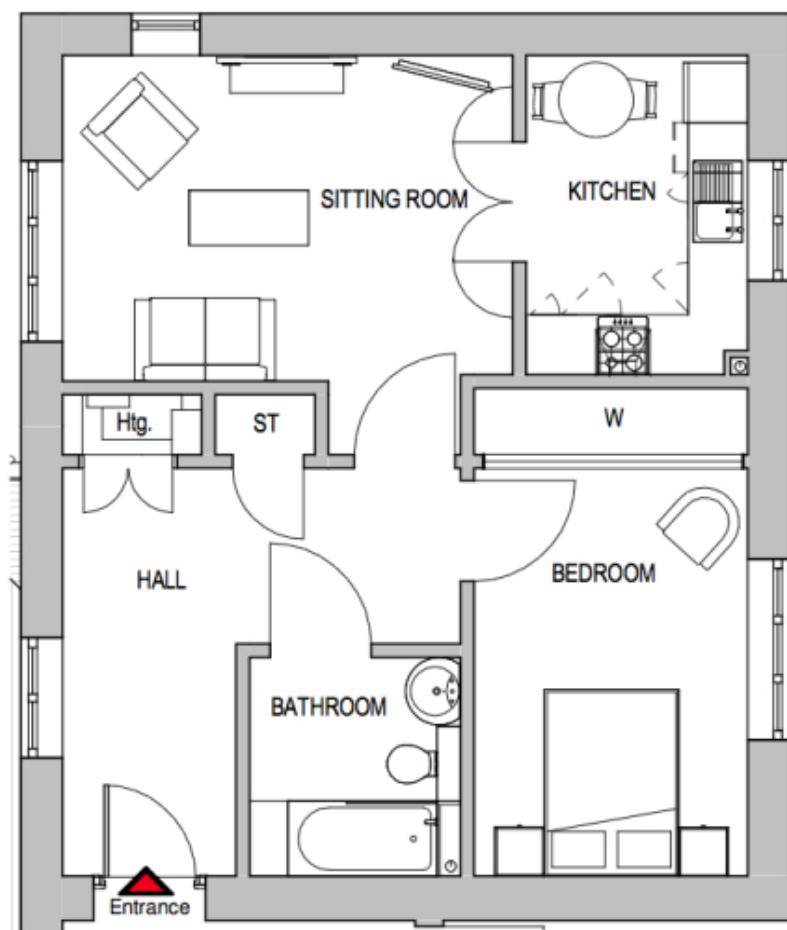


40 Hawthorn Lodge

A beautiful modern home



Price: £200,250*, First floor

This carefully considered apartment features an open plan kitchen alongside a versatile living space, both of which enjoy ample light through the large windows and French doors.

Available for £200,250 for 75% share based on the marketing figure of £267,000

* other charges apply

Apart from the fixtures and fittings described, the homes are unfurnished.

* Based on a 125-year lease, and subject to service charge, event fees and ground rent. Please ask for further information.

Version 3 - 19/10/2018

Internal measurements: 603sq ft

Sitting Room	10' 9" x 14' 10"	3,269 x 4,515mm
Kitchen	10' 6" x 7' 4"	3,200 x 2,225mm
Bathroom	7' 3" x 7' 0"	2,190 x 2,120mm
Bedroom	13' 5" x 9' 1"	4,086 x 2,745mm

