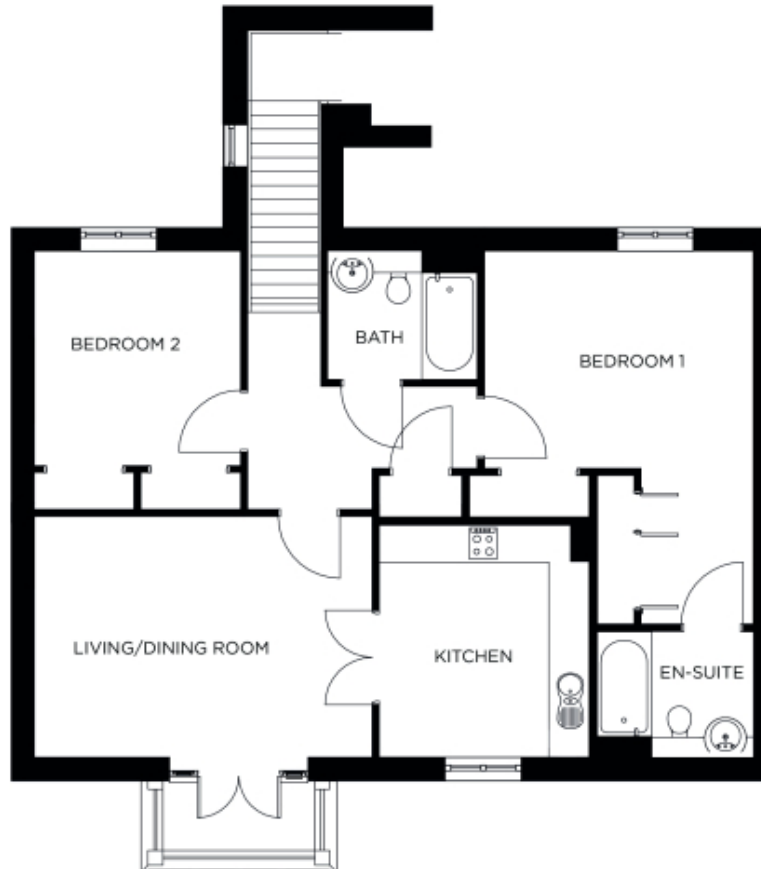


15 Elm House

A beautiful modern home



Price: £623,000*, First floor

This spacious apartment comes with flexible open plan living space, a fully equipped kitchen and two generous double bedrooms - one with en suite bathroom. A further separate bathroom makes this the perfect apartment to accommodate family and friends â “ its practical design offers flexibility for your future without compromising on style.

* other charges apply

Apart from the fixtures and fittings described, the homes are unfurnished.

* Based on a 125-year lease, and subject to service charge, event fees and ground rent. Please ask for further information.

Version 3 - 19/10/2018

Internal measurements: 1,195sq ft

Kitchen	11' 3" x 12' 6"	3,420 x 3,790mm
Living/Dining Room	18' 2" x 12' 11"	5,530 x 3,930mm
Bedroom 1	14' 5" x 11' 10"	4,390 x 3,600mm
Ensuite	8' 5" x 12' 6"	2,550 x 3,790mm
Bedroom 2	11' 1" x 11' 6"	3,370 x 3,500mm
Bathroom	8' 0" x 6' 10"	2,420 x 2,080mm

