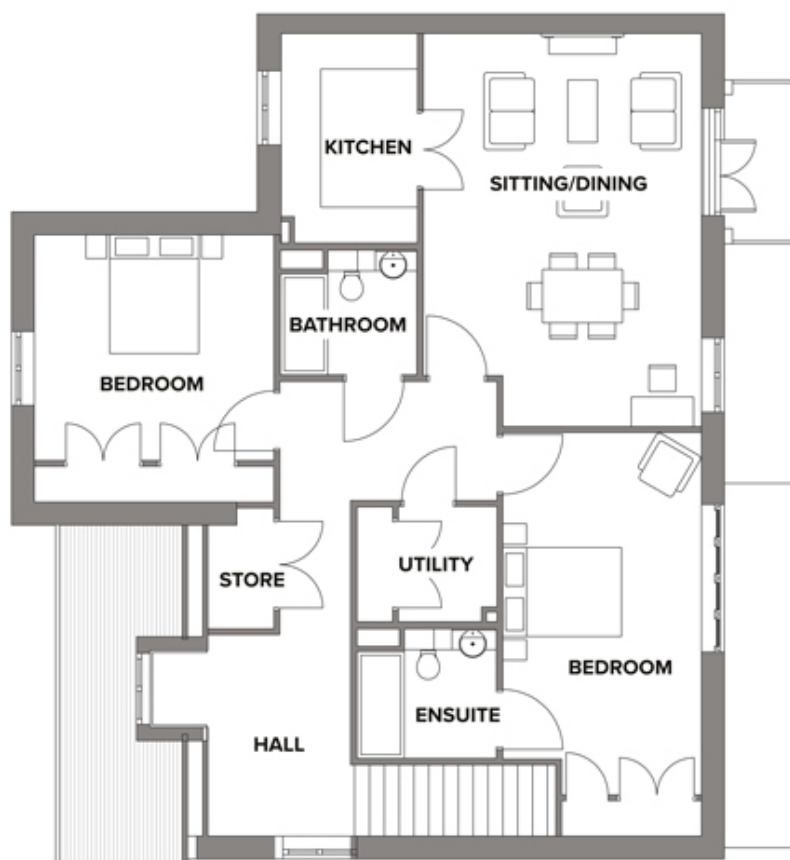


# 2 Howard Manor

A beautiful modern home



**Price: £529,000\*, First floor**

A grand apartment with enviable living space and large windows that let in lots of natural light. Its airy living room and large dining kitchen with pantry are complemented by a large en-suite master bedroom, a spacious second double-bedroom and generous hall space with ample storage.

\* other charges apply

Apart from the fixtures and fittings described, the homes are unfurnished.

\* Based on a 125-year lease, and subject to service charge, event fees and ground rent. Please ask for further information.

Version 3 - 19/10/2018

**Internal measurements: 1,271sq ft**

Sitting / Dining	21' 9" x 15' 5"	6,622 x 4,691mm
Kitchen	11' 7" x 7' 7"	3,529 x 2,300mm
Bedroom 1	20' 1" x 11' 0"	6,104 x 3,350mm
Bedroom 2	13' 4" x 12' 6"	4,042 x 3,803mm
Bathroom	7' 7" x 6' 11"	2,300 x 2,100mm
Ensuite	7' 9" x 7' 2"	2,350 x 2,180mm
Store	6' 9" x 3' 8"	2,035 x 1,117mm
Utility	6' 9" x 3' 8"	2,035 x 1,117mm





PLEASE NOTE: Images are for illustrative purposes only. Rooms shown may not be representative of this property.