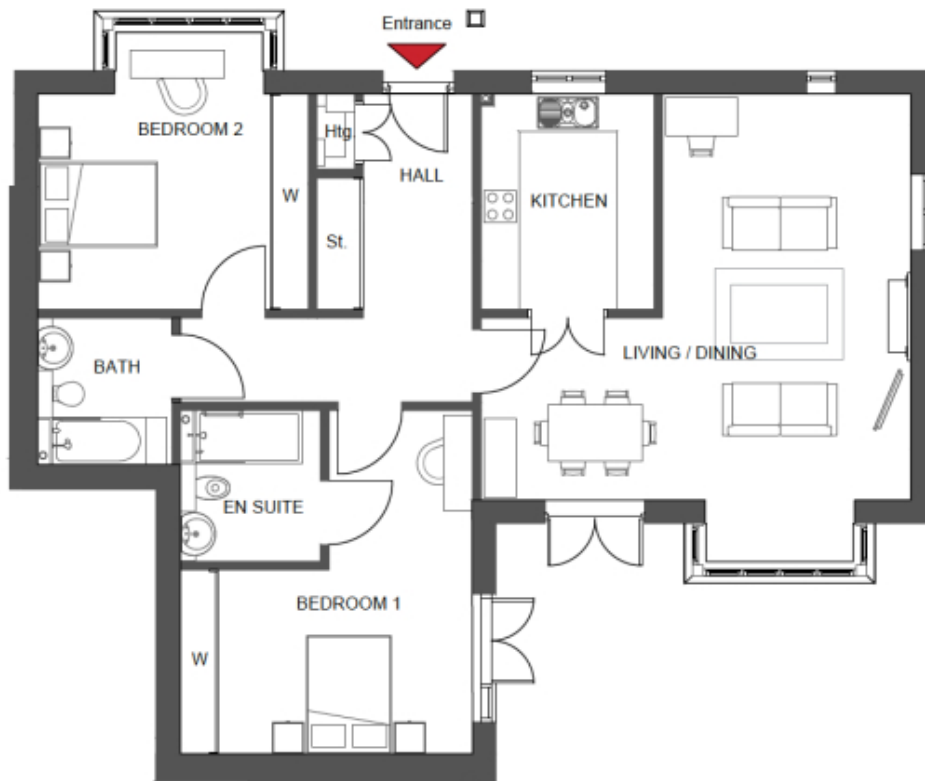


# 1 Connolly Lodge

A beautiful modern home



## Price: £POA\*, Ground floor

This attractive apartment is spacious and its considered design combines practicality and style to make life easier. Two generous double-bedrooms (with master en-suite) are linked by a storage-filled hallway leading from the large open plan dining area that adjoins the fully-equipped kitchen. The second bedroom and separate bathroom make this apartment practical to accommodate family and friends.

## Internal measurements: 1,204sq ft

Sitting/Dining	22' 6" x 24' 5"	6,840 x 7,440mm
Kitchen	9' 1" x 11' 3"	2,750 x 3,429mm
Bathroom	7' 1" x 7' 8"	2,141 x 2,333mm
Bedroom 1	15' 4" x 18' 0"	4,658 x 5,462mm
Ensuite	7' 4" x 7' 11"	2,230 x 2,400mm
Bedroom 2	14' 2" x 14' 6"	4,313 x 4,407mm

Apart from the fixtures and fittings described, the homes are unfurnished.

\* Based on a 125-year lease, and subject to service charge, event fees and ground rent. Please ask for further information.

Version 3 - 19/10/2018





PLEASE NOTE: Images are for illustrative purposes only. Rooms shown may not be representative of this property.