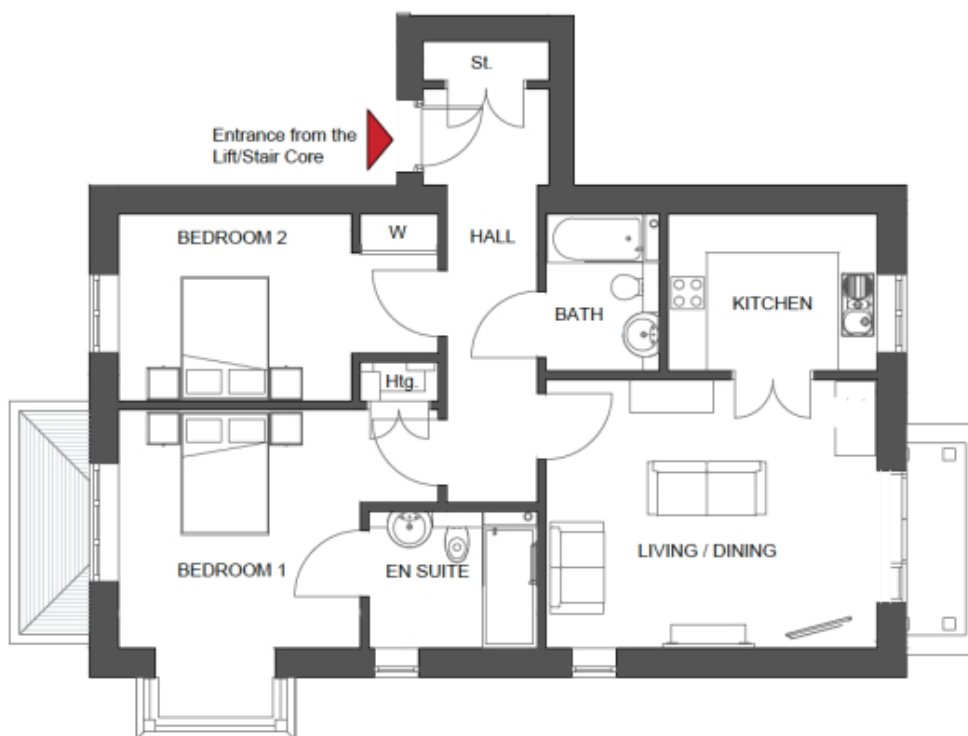


5 Connolly Lodge

A beautiful modern home



Price: £POA*, First floor

This charming home features two perfectly proportioned double-bedrooms - one with en-suite - along with a separate bathroom and carefully designed kitchen. The adjacent living area offers an intimate space that's flooded with light.

Internal measurements: 840sq ft

Sitting/Dining	16' 9" x 13' 7"	5,091 x 4,118mm
Kitchen	10' 7" x 7' 11"	3,215 x 2,410mm
Bathroom	5' 9" x 7' 11"	1,740 x 2,410mm
Bedroom 1	12' 3" x 12' 1"	3,713 x 3,658mm
Ensuite	8' 6" x 6' 11"	2,586 x 2,100mm
Bedroom 2	16' 2" x 9' 6"	4,908 x 2,872mm

Apart from the fixtures and fittings described, the homes are unfurnished.

* Based on a 125-year lease, and subject to service charge, event fees and ground rent. Please ask for further information.

Version 3 - 19/10/2018



PLEASE NOTE: Images are for illustrative purposes only. Rooms shown may not be representative of this property.