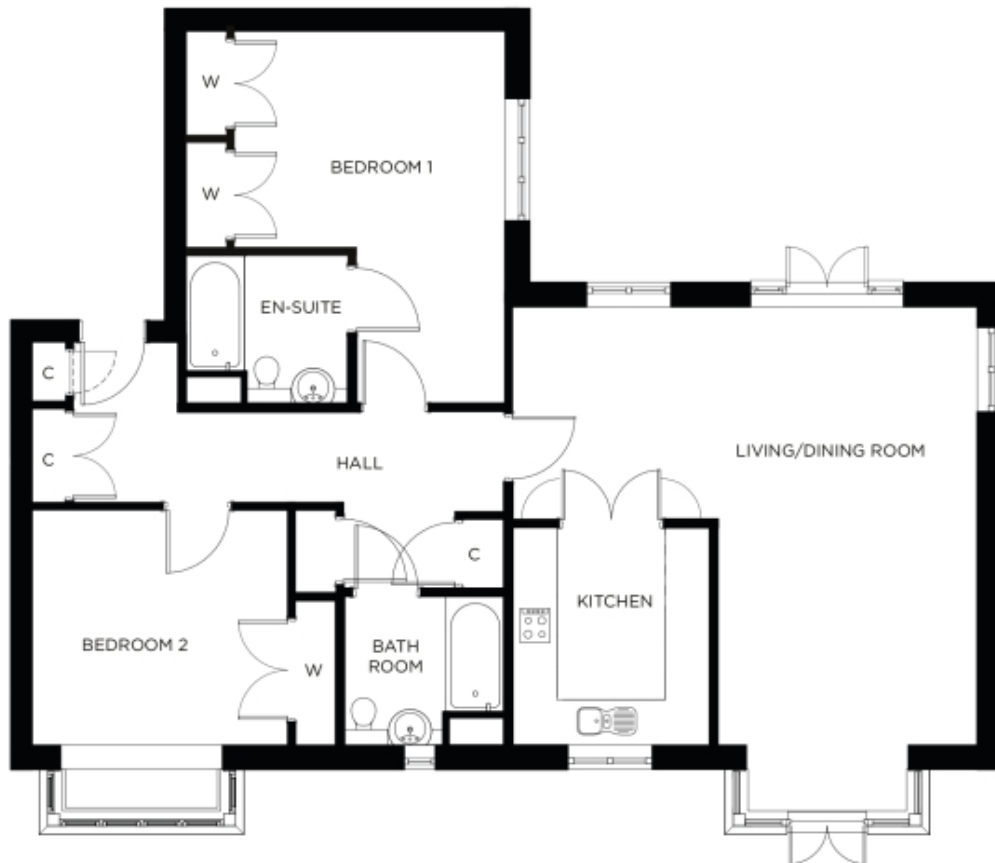


2 Bishops Manor

A beautiful modern home



Price: £626,000*, Ground floor

This attractive apartment is spacious and its considered design combines practicality and style to make life easier. Two generous double-bedrooms (with master en-suite) are linked by a storage-filled hallway leading from the large open plan dining area that adjoins the fully-equipped kitchen. The second bedroom and separate bathroom make this apartment practical to accommodate family and friends.

Internal measurements: 1,213sq ft

Kitchen	10' 7" x 9' 6"	3,210 x 2,890mm
Living/Dining Room	22' 7" x 21' 4"	6,860 x 6,480mm
Bedroom 1	18' 2" x 13' 2"	5,520 x 4,010mm
Ensuite	8' 0" x 6' 9"	2,430 x 2,050mm
Bedroom 2	11' 5" x 12' 3"	3,470 x 3,720mm
Bathroom	8' 0" x 6' 9"	2,430 x 2,050mm

*Other charges apply. All measurements are approximate. The homes are unfurnished.

* Based on a 125-year lease, and subject to service charge, event fees and ground rent. Please ask for further information.

Version 3 - 19/10/2018



PLEASE NOTE: Images are for illustrative purposes only. Rooms shown may not be representative of this property.