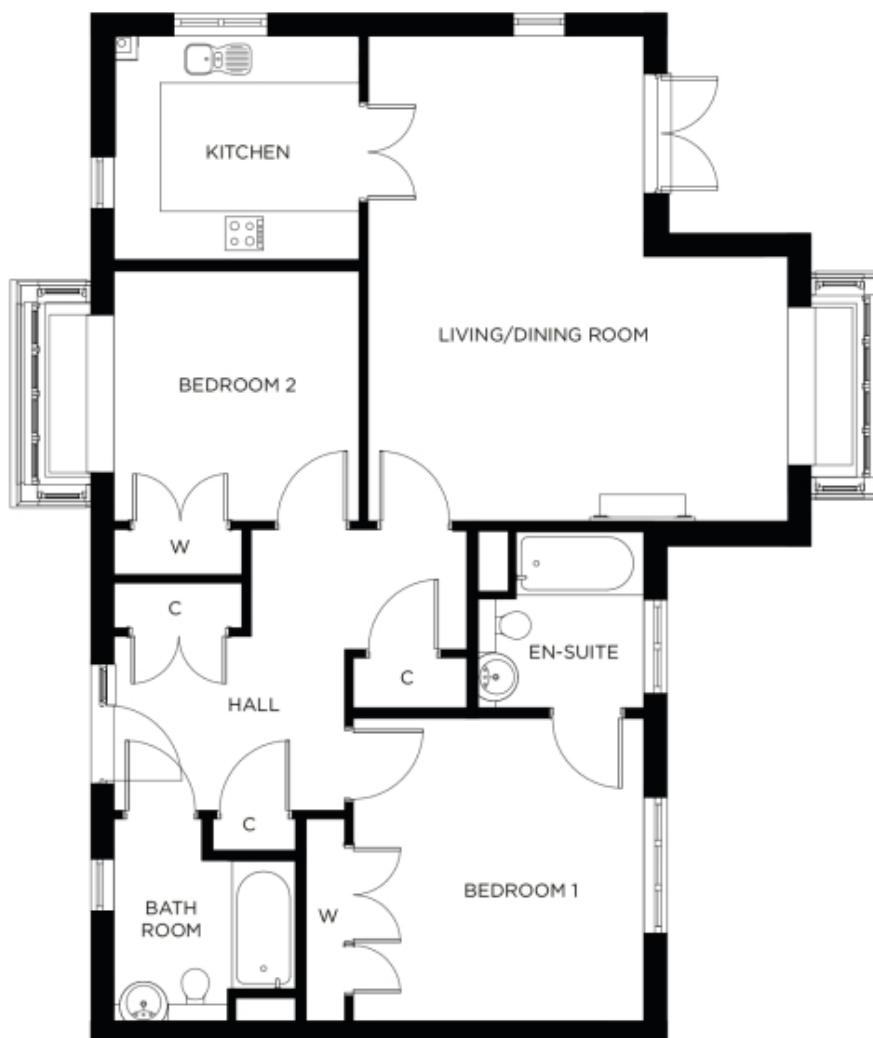


# 1 Cooper Manor

A beautiful modern home



Price: £552,000\*, Ground floor

This beautiful apartment features a versatile open plan living space adjacent to the fully-equipped kitchen. An en-suite master bedroom is supplemented by a second double-bedroom and separate bathroom, giving the flexibility to entertain guests all year round.

\* other charges apply

Internal measurements: 1,106sq ft

Kitchen	10' 9" x 10' 1"	3,270 x 3,050mm
Living/Dining Room	21' 4" x 18' 3"	6,480 x 5,560mm
Bedroom 1	13' 0" x 12' 5"	3,960 x 3,770mm
Ensuite	8' 0" x 6' 9"	2,430 x 2,050mm
Bedroom 2	10' 11" x 10' 10"	3,310 x 3,280mm
Bathroom	9' 1" x 8' 0"	2,760 x 2,430mm

Apart from the fixtures and fittings described, the homes are unfurnished.

\* Based on a 125-year lease, and subject to service charge, event fees and ground rent. Please ask for further information.

Version 3 - 19/10/2018