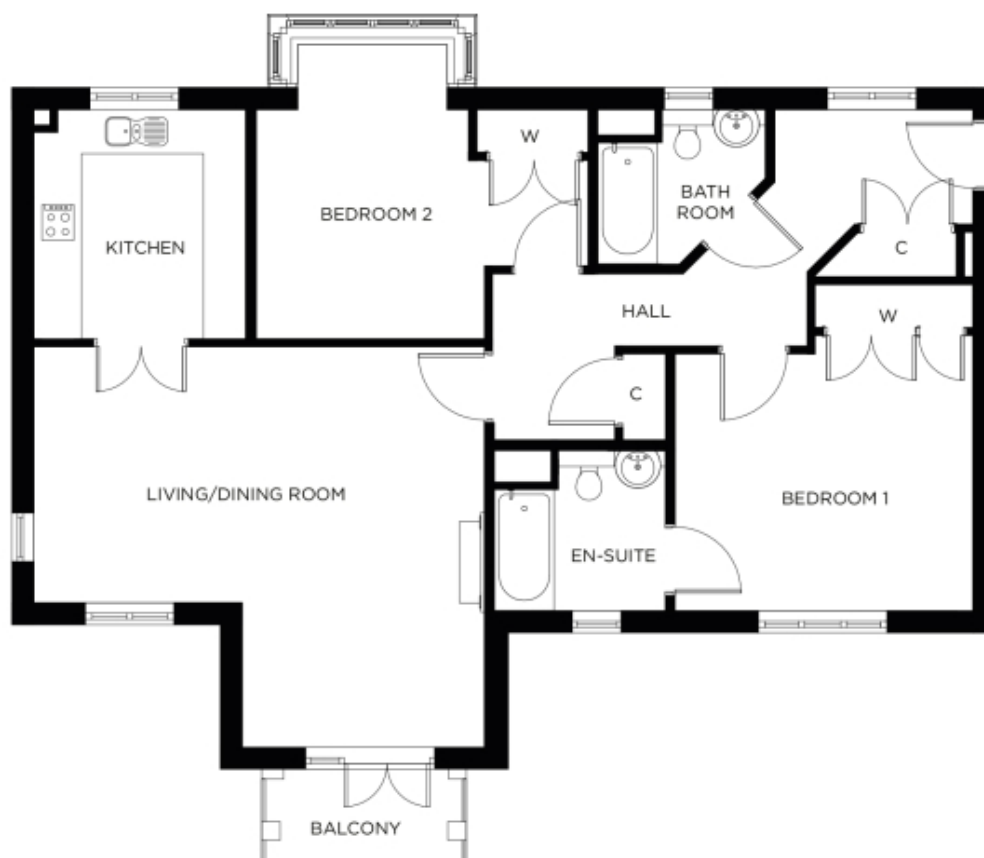


6 Cooper Manor

A beautiful modern home



Price: £561,000*, First floor

This beautiful apartment features a versatile open plan living space adjacent to the fully-equipped kitchen. An en-suite master bedroom is supplemented by a second double-bedroom and separate bathroom, giving the flexibility to entertain guests all year round.

Internal measurements: 1,088sq ft

Kitchen	10' 7" x 10' 1"	3,220 x 3,050mm
Living/Dining Room	20' 11" x 18' 5"	6,370 x 5,610mm
Bedroom 1	13' 7" x 12' 0"	4,140 x 3,650mm
Ensuite	8' 0" x 7' 2"	2,430 x 2,180mm
Bedroom 2	15' 1" x 10' 8"	4,580 x 3,230mm
Bathroom	8' 0" x 6' 9"	2,430 x 2,050mm

Apart from the fixtures and fittings described, the homes are unfurnished.

* Based on a 125-year lease, and subject to service charge, event fees and ground rent. Please ask for further information.

Version 3 - 19/10/2018



PLEASE NOTE: Images are for illustrative purposes only. Rooms shown may not be representative of this property.