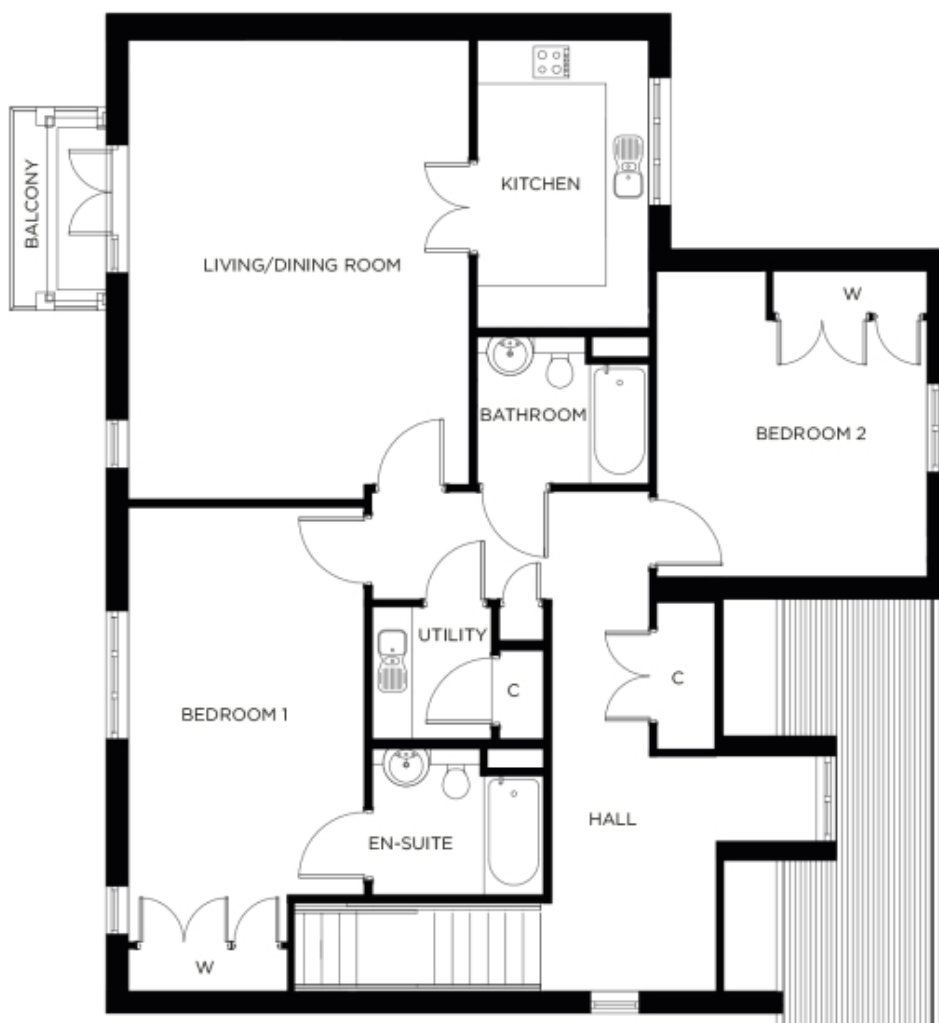


# 4 Wood Priory

A beautiful modern home



Price: £649,000\*, First floor

This exceptional apartment features a self-contained kitchen that's accessible from both the hallway and the large open-plan living area. Two large double bedrooms (one en-suite) and a separate bathroom are complemented by ample storage space throughout.

\* other charges apply

Internal measurements: 1,382sq ft

Kitchen	13' 8" x 8' 0"	4,150 x 2,430mm
Living/Dining Room	20' 10" x 15' 11"	6,350 x 4,830mm
Bedroom 1	20' 8" x 11' 0"	6,280 x 3,340mm
Ensuite	8' 0" x 6' 9"	2,430 x 2,050mm
Bedroom 2	14' 3" x 12' 6"	4,340 x 3,810mm
Bathroom	8' 0" x 6' 9"	2,430 x 2,050mm

Apart from the fixtures and fittings described, the homes are unfurnished.

\* Based on a 125-year lease, and subject to service charge, event fees and ground rent. Please ask for further information.

Version 3 - 19/10/2018





PLEASE NOTE: Images are for illustrative purposes only. Rooms shown may not be representative of this property.