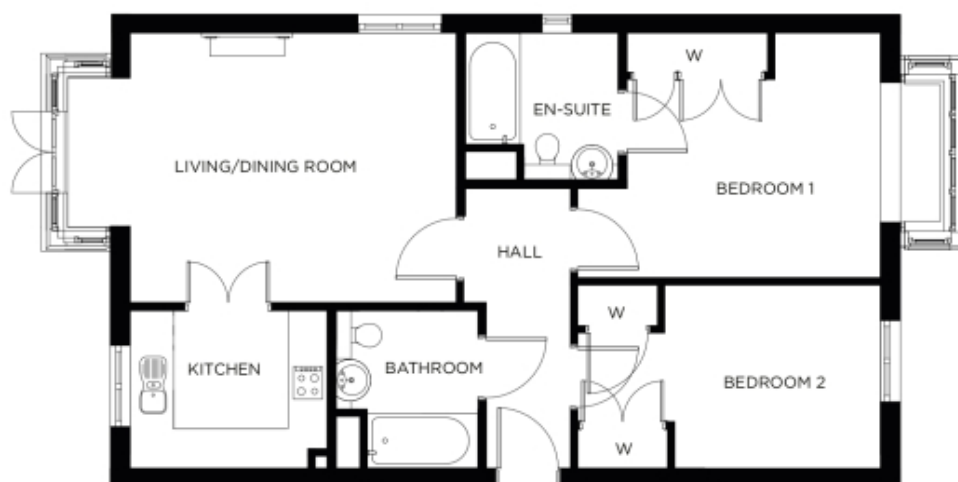


# 3 Tate Manor

A beautiful modern home



**Price: £464,500\*, Ground floor**

This charming home features two perfectly proportioned double-bedrooms - one with en-suite - along with a separate bathroom and carefully designed kitchen. The adjacent living area offers an intimate space that's flooded with light.

\* other charges apply

**Internal measurements: 883sq ft**

Kitchen	10' 0" x 8' 0"	3,040 x 2,430mm
Living/Dining Room	16' 6" x 13' 8"	5,020 x 4,150mm
Bedroom 1	15' 4" x 12' 5"	4,660 x 3,760mm
Ensuite	8' 0" x 6' 10"	2,430 x 2,060mm
Bedroom 2	15' 4" x 9' 4"	4,660 x 2,830mm
Bathroom	8' 0" x 6' 9"	2,430 x 2,050mm

Apart from the fixtures and fittings described, the homes are unfurnished.

\* Based on a 125-year lease, and subject to service charge, event fees and ground rent. Please ask for further information.

Version 3 - 19/10/2018





PLEASE NOTE: Images are for illustrative purposes only. Rooms shown may not be representative of this property.