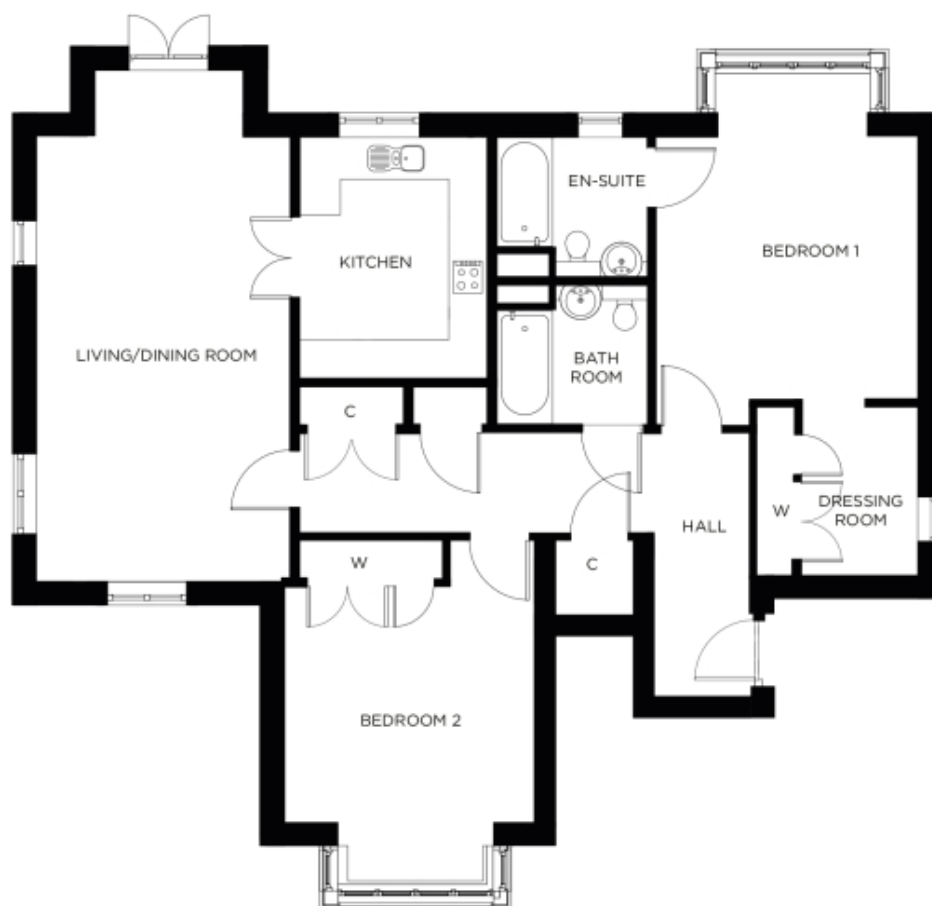


1 Palin House



Price: £643,000*, Ground floor

This spacious two-bedroom apartment features an open-plan living area, fully equipped kitchen, master bedroom with dressing room and en-suite, and a second double bedroom with separate bathroom, perfect for hosting family and friends.

* other charges apply

Internal measurements: 1,292sq ft

Kitchen	10' 1" x 12' 4"	3,050 x 3,750mm
Living/Dining Room	12' 3" x 22' 9"	3,710 x 6,930mm
Bedroom 1	13' 6" x 14' 0"	4,100 x 4,250mm
Dressing room	5' 10" x 8' 6"	1,760 x 2,570mm
Ensuite	8' 0" x 6' 9"	2,430 x 2,050mm
Bedroom 2	12' 10" x 15' 7"	3,900 x 4,730mm
Bathroom	8' 0" x 7' 6"	2,430 x 2,280mm

Apart from the fixtures and fittings described, the homes are unfurnished.

* Based on a 125-year lease, and subject to service charge, event fees and ground rent. Please ask for further information.

Version 3 - 19/10/2018



PLEASE NOTE: Images are for illustrative purposes only. Rooms shown may not be representative of this property.