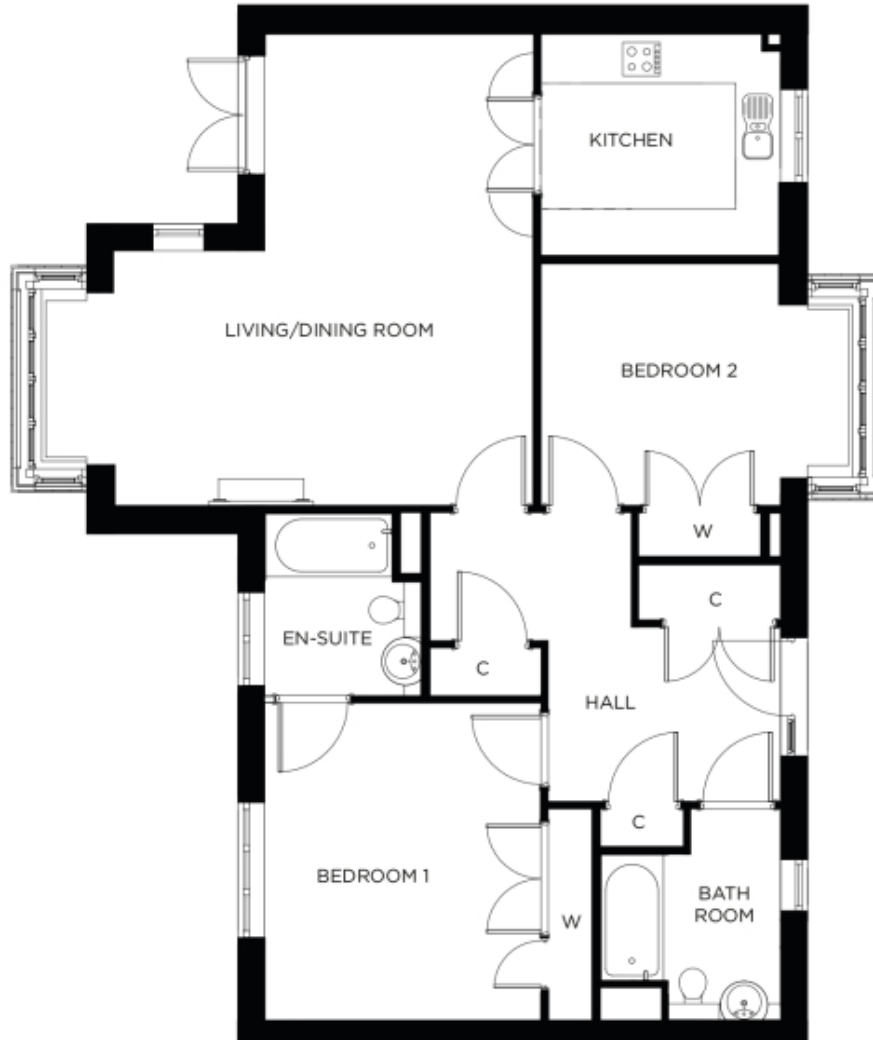


3 Saunders Mews

A beautiful modern home



Price: £POA*, Ground floor

This beautiful apartment features a versatile open plan living space adjacent to the fully-equipped kitchen. An en-suite master bedroom is supplemented by a second double-bedroom and separate bathroom, giving the flexibility to entertain guests all year round.

* other charges apply

Internal measurements: 1,105sq ft

Kitchen	9' 10" x 10' 5"	2,980 x 3,150mm
Living/Dining Room	18' 6" x 20' 11"	5,630 x 6,370mm
Bedroom 1	12' 1" x 13' 9"	3,660 x 4,190mm
Ensuite	6' 9" x 7' 11"	2,040 x 2,410mm
Bedroom 2	10' 5" x 10' 9"	3,160 x 3,270mm
Bathroom	7' 9" x 9' 4"	2,360 x 2,830mm

Apart from the fixtures and fittings described, the homes are unfurnished.

* Based on a 125-year lease, and subject to service charge, event fees and ground rent. Please ask for further information.

Version 3 - 19/10/2018



PLEASE NOTE: Images are for illustrative purposes only. Rooms shown may not be representative of this property.