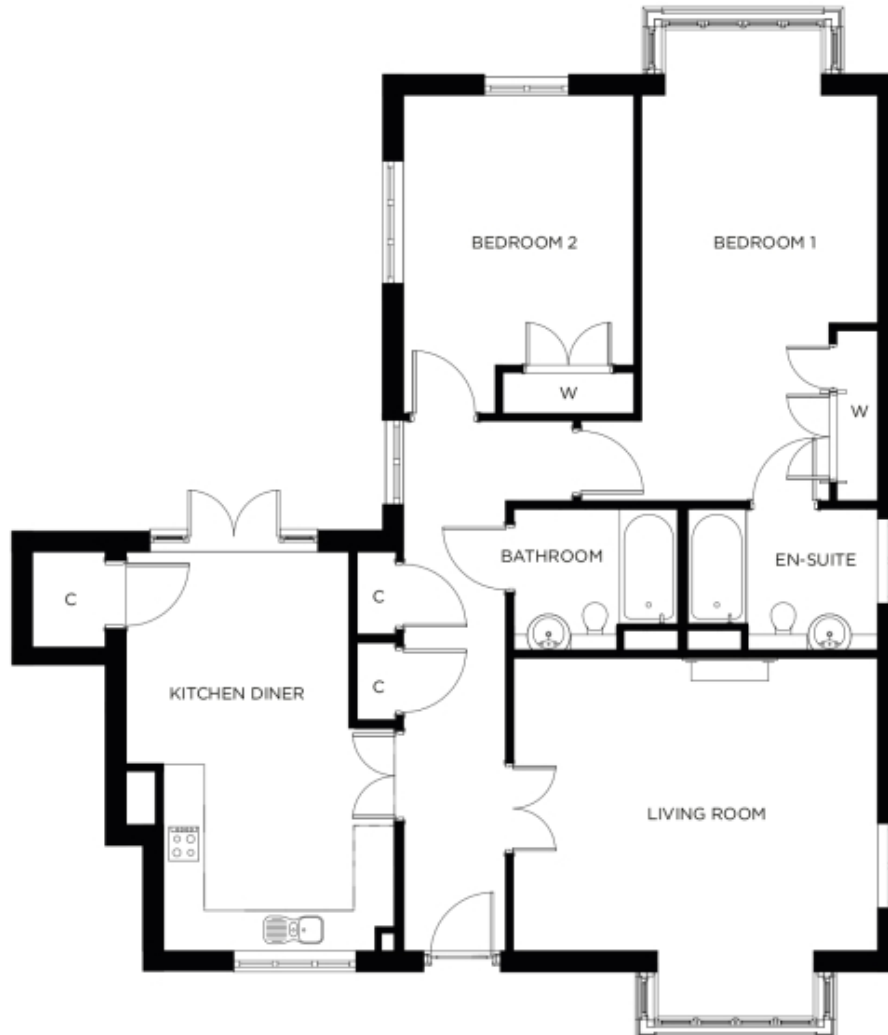


1 Wilson Meadows

A beautiful modern home



Price: £POA*, Ground floor

A grand apartment with enviable living space and large windows that let in lots of natural light. Its airy living room and large dining kitchen with pantry are complemented by a large en-suite master bedroom, a spacious second double-bedroom and generous hall space with ample storage.

Internal measurements: 1,286sq ft

Kitchen	19' 6" x 13' 1"	5,920 x 3,970mm
Living/Dining Room	17' 9" x 14' 3"	5,410 x 4,340mm
Bedroom 1	19' 9" x 11' 7"	6,000 x 3,510mm
Ensuite	9' 4" x 6' 10"	2,830 x 2,080mm
Bedroom 2	15' 6" x 11' 3"	4,710 x 3,420mm
Bathroom	8' 0" x 6' 10"	2,430 x 2,080mm

Apart from the fixtures and fittings described, the homes are unfurnished.

* Based on a 125-year lease, and subject to service charge, event fees and ground rent. Please ask for further information.

Version 3 - 19/10/2018



PLEASE NOTE: Images are for illustrative purposes only. Rooms shown may not be representative of this property.