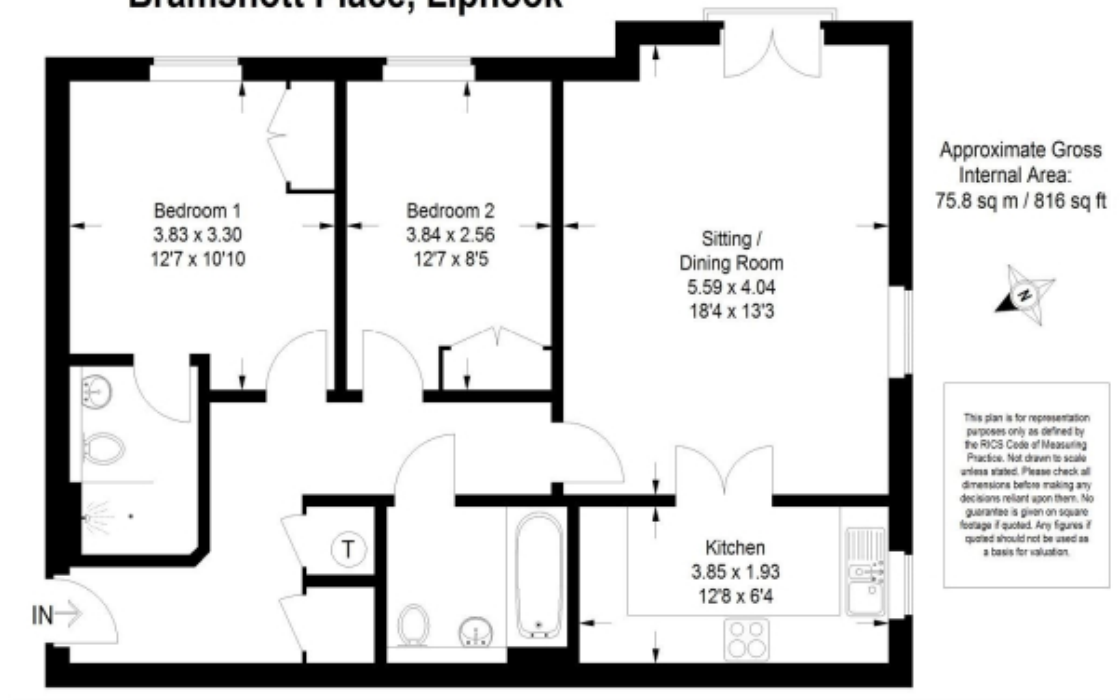


9 Westwood House

Bramshott Place, Liphook



Price: £POA*, Second floor

Internal measurements: 816sq ft

Sitting/Dining Room	18' 5" x 13' 4"	5,590 x 4,040mm
Kitchen	12' 8" x 6' 4"	3,850 x 1,930mm
Bedroom 1	12' 7" x 10' 10"	3,830 x 3,300mm
Bedroom 2	12' 8" x 8' 5"	3,840 x 2,560mm

Apart from the fixtures and fittings described, the homes are unfurnished.

* Based on a 125-year lease, and subject to service charge, event fees and ground rent. Please ask for further information.

Version 3 - 19/10/2018



PLEASE NOTE: Images are for illustrative purposes only, Rooms shown may not be representative of this property.