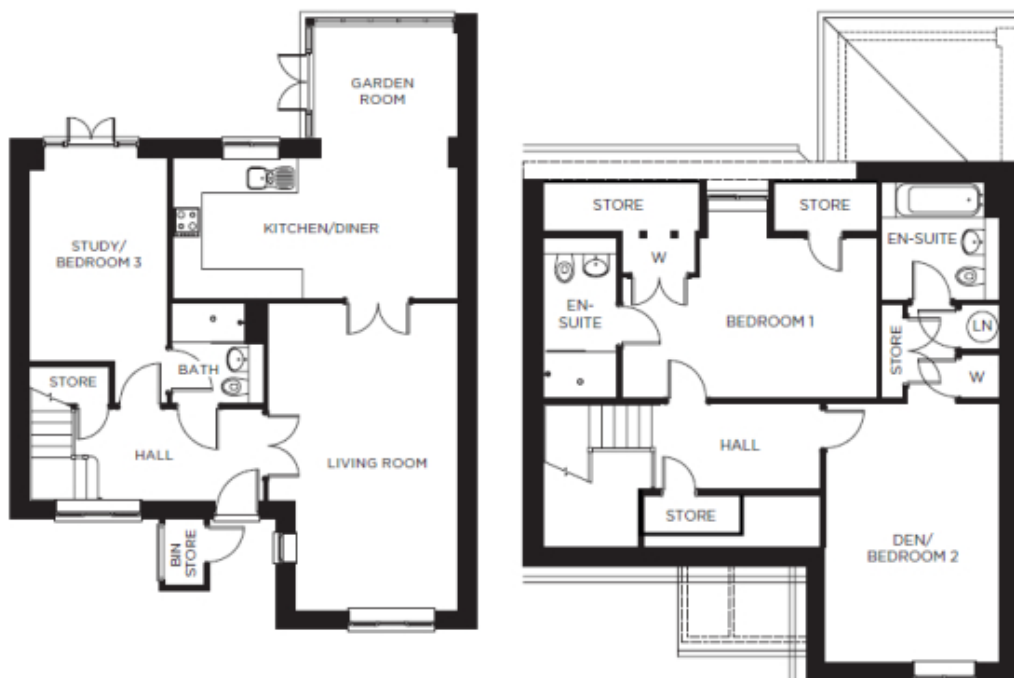


# 16 King Georges Drive and Garage



Price: £575,000\*

Internal measurements: 1,382sq ft

Sitting Room	20' 6" x 12' 8"	6,240 x 3,850mm
Kitchen/Dining Room	19' 2" x 18' 4"	5,820 x 5,580mm
Bedroom 1	16' 3" x 9' 7"	4,950 x 2,920mm
Bedroom 2	15' 9" x 10' 1"	4,780 x 3,070mm
Bedroom 3	13' 6" x 9' 2"	4,110 x 2,770mm

Apart from the fixtures and fittings described, the homes are unfurnished.

\* Based on a 125-year lease, and subject to service charge, event fees and ground rent. Please ask for further information.

Version 3 - 19/10/2018



PLEASE NOTE: Images are for illustrative purposes only, Rooms shown may not be representative of this property.