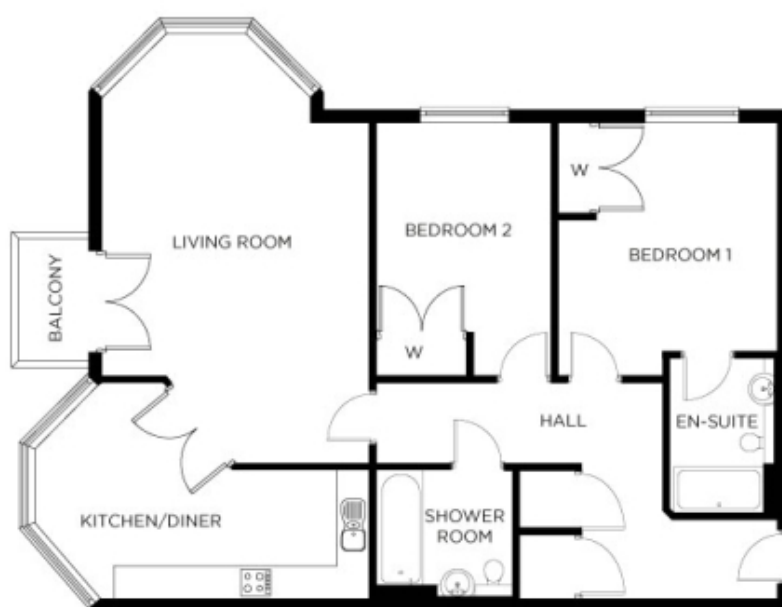


6 Westwood House



Price: £369,000*, First floor

* other charges apply

Internal measurements: 873sq ft

Kitchen / Dining	17' 2" x 10' 3"	5,210 x 3,110mm
Living	13' 5" x 21' 5"	4,070 x 6,510mm
Bedroom 1	10' 10" x 12' 8"	3,290 x 3,840mm
En Suite	5' 4" x 7' 9"	1,610 x 2,340mm
Bedroom 2	8' 5" x 12' 8"	2,550 x 3,840mm
Bathroom	7' 5" x 6' 5"	2,240 x 1,940mm

Apart from the fixtures and fittings described, the homes are unfurnished.

* Based on a 125-year lease, and subject to service charge, event fees and ground rent. Please ask for further information.

Version 3 - 19/10/2018