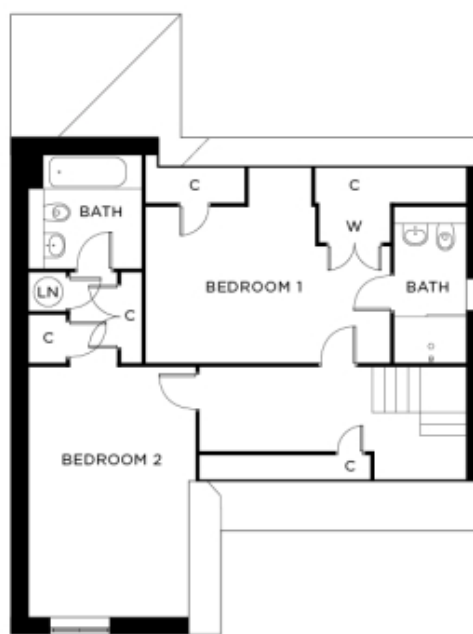


# 9 Hooke Court & Garage



Price: £590,000\*

\* other charges apply

Internal measurements: 1,371sq ft

Kitchen / Diner	19' 2" x 9' 5"	5,820 x 2,860mm
Living Room	20' 7" x 12' 9"	6,250 x 3,870mm
Bedroom 1	16' 0" x 10' 1"	4,860 x 3,060mm
Bedroom 2	16' 4" x 9' 9"	4,970 x 2,950mm
Bedroom 3 / Study	16' 6" x 9' 2"	5,010 x 2,790mm

Apart from the fixtures and fittings described, the homes are unfurnished.

\* Based on a 125-year lease, and subject to service charge, event fees and ground rent. Please ask for further information.

Version 3 - 19/10/2018