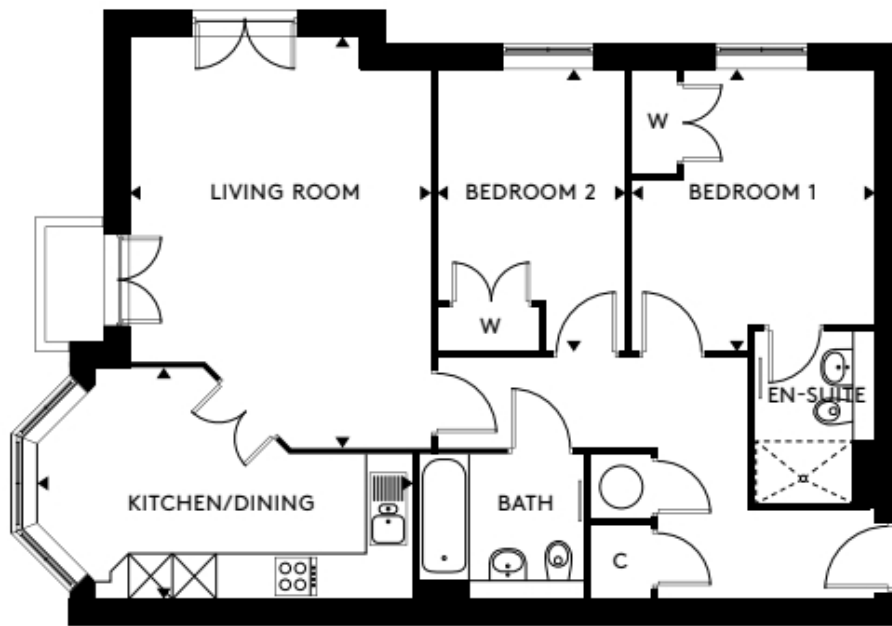


# 10 Shelley House

A beautiful modern home



Price: £POA\*, Second floor

Internal measurements: 839sq ft

Shelley House is right at the heart of the village, situated next to the clubhouse and its excellent facilities. With 12 two-bedroom apartments, all boasting a spacious balcony or patio, Shelley House is the ideal base for those who want to be at the centre of the community.

Apart from the fixtures and fittings described, the homes are unfurnished.

\* Based on a 125-year lease, and subject to service charge, event fees and ground rent. Please ask for further information.

Version 3 - 19/10/2018



PLEASE NOTE: Images are for illustrative purposes only. Rooms shown may not be representative of this property.