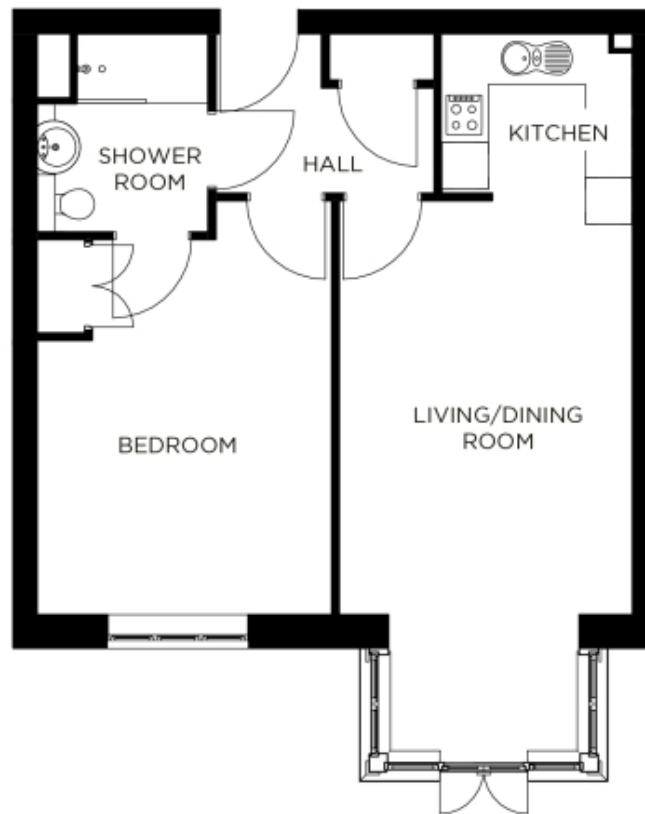


# 6 The Grange

A beautiful modern home



## Price: £356,000\*, Ground floor

Our spacious one and two-bedroom retirement living apartments offer the perfect balance of style and function, centrally located to ensure easy access to our village facilities.

\* other charges apply

## Internal measurements: 660sq ft

Kitchen	8' 1" x 8' 0"	2,450 x 2,420mm
Living/Dining Room	12' 5" x 17' 6"	3,770 x 5,330mm
Bedroom 1	12' 6" x 17' 6"	3,790 x 5,330mm
Bathroom	8' 4" x 7' 3"	2,540 x 2,190mm



PLEASE NOTE: Images are for illustrative purposes only, rooms shown may not be representative of this property.