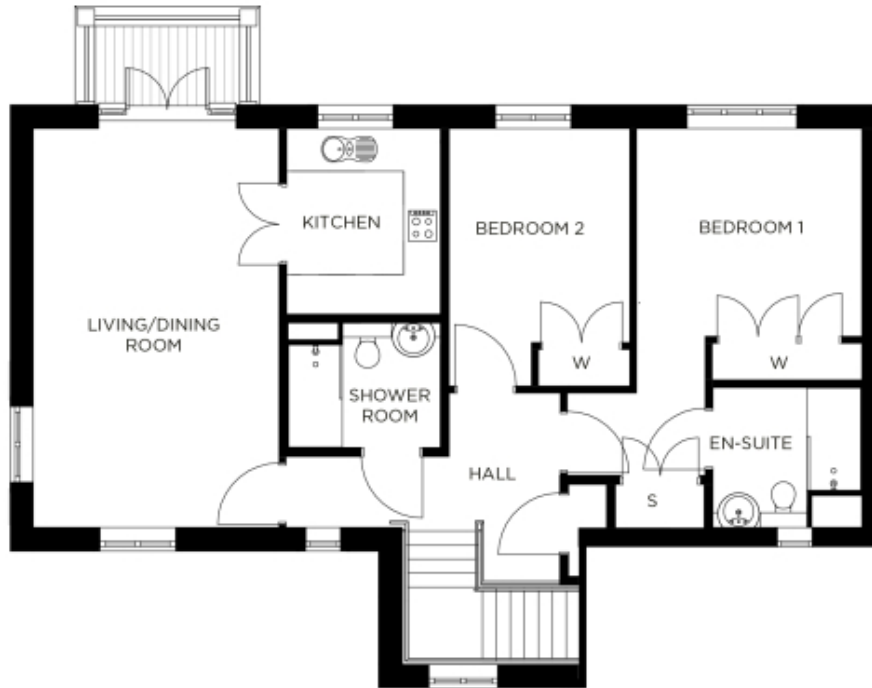


4 Partridge House

A beautiful modern home



Price: £POA*, First floor

This beautifully proportioned apartment features two generous double bedrooms (one en suite) as well as a separate bathroom and integrated storage space throughout. The sizeable open plan living/dining space leads to a modern kitchen, with double doors creating added flexibility. It's the perfect home in which to entertain family and friends all year round.

* other charges apply

Internal measurements: 1,015sq ft

Kitchen	8' 3" x 9' 11"	2,490 x 3,020mm
Living/Dining Room	13' 4" x 21' 6"	4,050 x 6,550mm
Bedroom 1	12' 4" x 13' 8"	3,750 x 4,150mm
Ensuite	8' 1" x 7' 7"	2,440 x 2,290mm
Bedroom 2	9' 6" x 11' 8"	2,880 x 3,540mm
Shower Room	8' 1" x 6' 9"	2,440 x 2,040mm