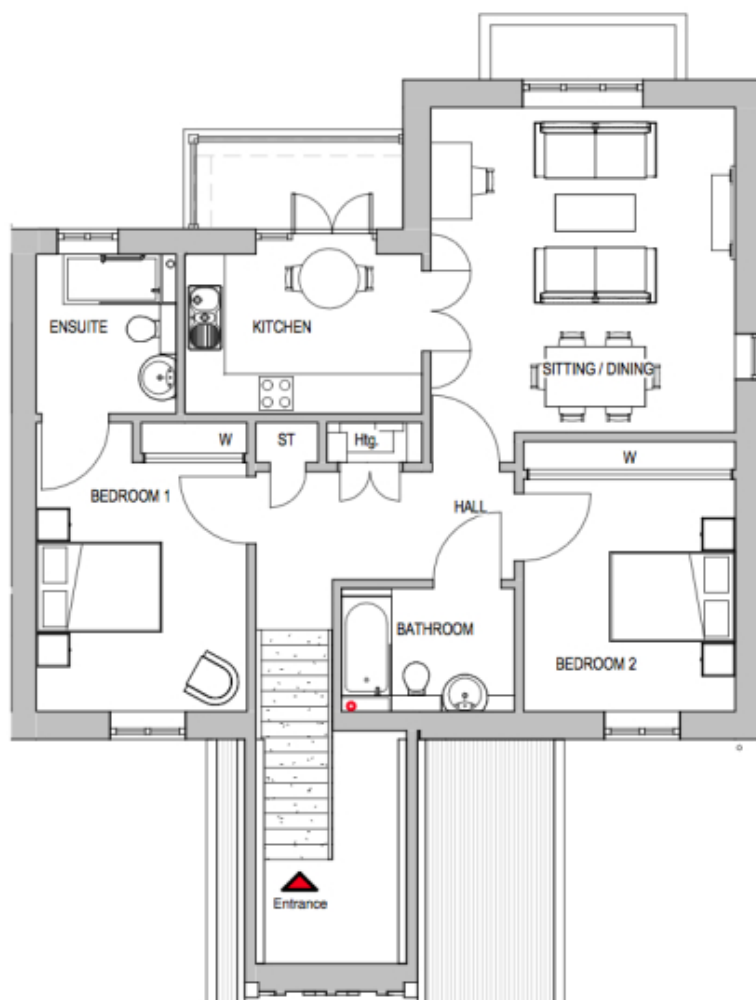


2 Primrose Vale

A beautiful modern home



Price: £445,000*, First floor

This spacious apartment comes with flexible open plan living space, a fully equipped kitchen and two generous double-bedrooms - one with en-suite bathroom. A separate bathroom makes this the perfect apartment to accommodate family and friends – its practical design offers flexibility for your future without compromising on style.

* other charges apply

Apart from the fixtures and fittings described, the homes are unfurnished.

* Based on a 125-year lease, and subject to service charge, event fees and ground rent. Please ask for further information.

Version 3 - 19/10/2018

Internal measurements: 915sq ft

Sitting/Dining	16' 1" x 15' 1"	4,878 x 4,573mm
Kitchen	7' 11" x 11' 9"	2,392 x 3,557mm
Bathroom	6' 2" x 8' 8"	1,859 x 2,621mm
Bedroom 1	12' 4" x 10' 5"	3,734 x 3,175mm
Ensuite	7' 11" x 6' 11"	2,392 x 2,100mm
Bedroom 2	11' 6" x 10' 6"	3,492 x 3,178mm