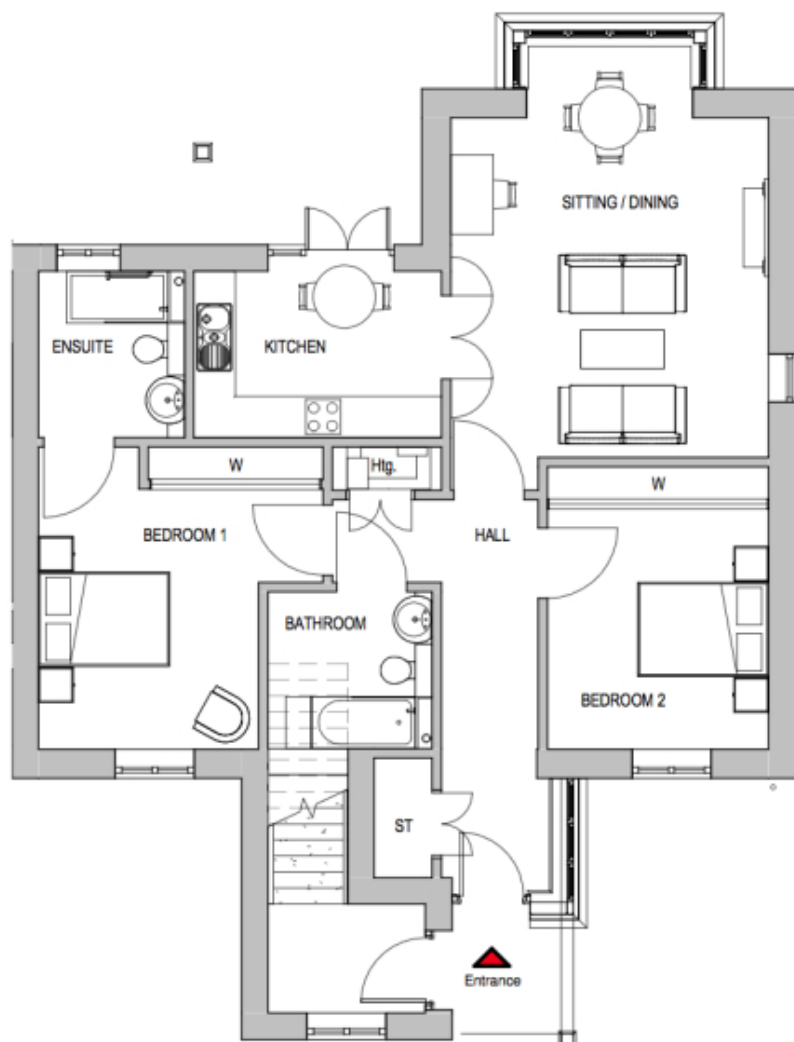


1 Primrose Vale

A beautiful modern home



Price: £POA*, Ground floor

This spacious apartment comes with flexible open-plan living space, a fully equipped kitchen and two generous double bedrooms - one with en suite bathroom. A separate bathroom makes this the perfect apartment to accommodate family and friends â€” its practical design offers flexibility for your future without compromising on style.

Internal measurements: 938sq ft

Sitting/Dining	19' 7" x 15' 0"	5,951 x 4,568mm
Kitchen	7' 11" x 11' 9"	2,392 x 3,557mm
Bathroom	7' 6" x 7' 9"	2,275 x 2,357mm
Bedroom 1	12' 4" x 10' 5"	3,740 x 3,164mm
Ensuite	7' 11" x 6' 11"	2,392 x 2,100mm
Bedroom 2	11' 5" x 10' 6"	3,457 x 3,178mm

Apart from the fixtures and fittings described, the homes are unfurnished.

* Based on a 125-year lease, and subject to service charge, event fees and ground rent. Please ask for further information.

Version 3 - 19/10/2018

