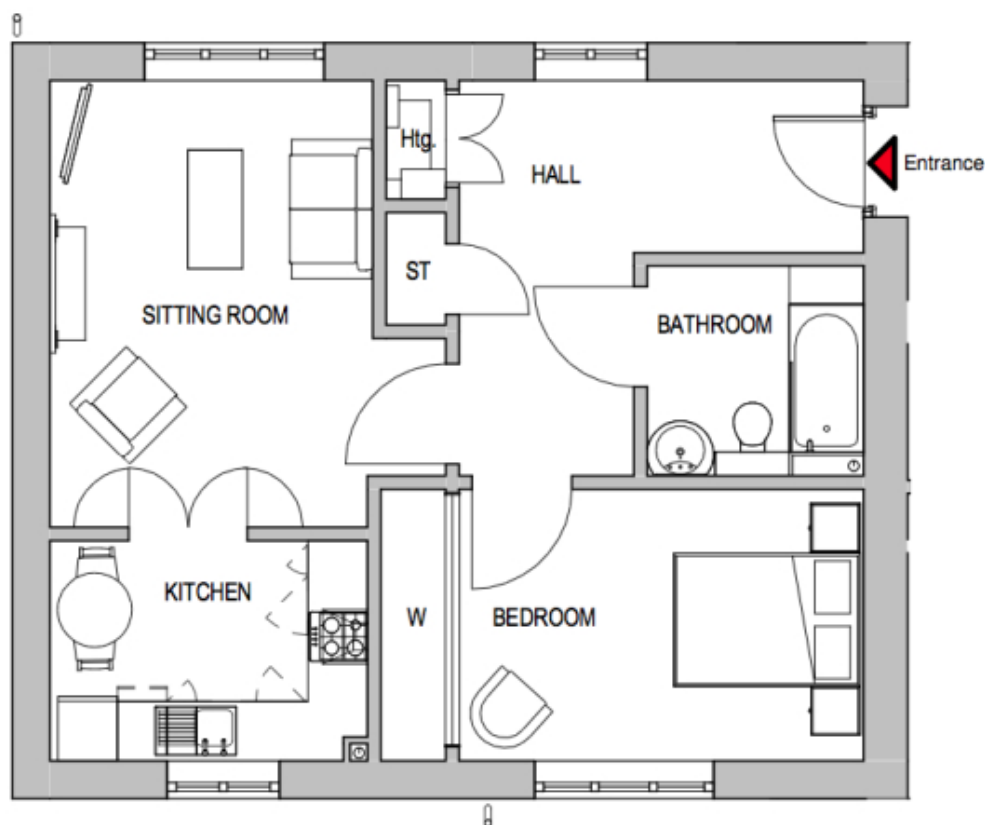


# 44 Hawthorn Lodge

A beautiful modern home



**Price: £246,000\*, First floor**

This carefully considered apartment features an open plan kitchen alongside a versatile living space, both of which enjoy ample light through the large windows and French doors.

**Internal measurements: 603sq ft**

Sitting Room	14' 10" x 10' 9"	4,515 x 3,261mm
Kitchen	7' 4" x 10' 7"	2,225 x 3,210mm
Bathroom	7' 0" x 7' 3"	2,120 x 2,186mm
Bedroom	9' 1" x 13' 6"	2,745 x 4,090mm

Apart from the fixtures and fittings described, the homes are unfurnished.

\* Based on a 125-year lease, and subject to service charge, event fees and ground rent. Please ask for further information.

Version 3 - 19/10/2018



