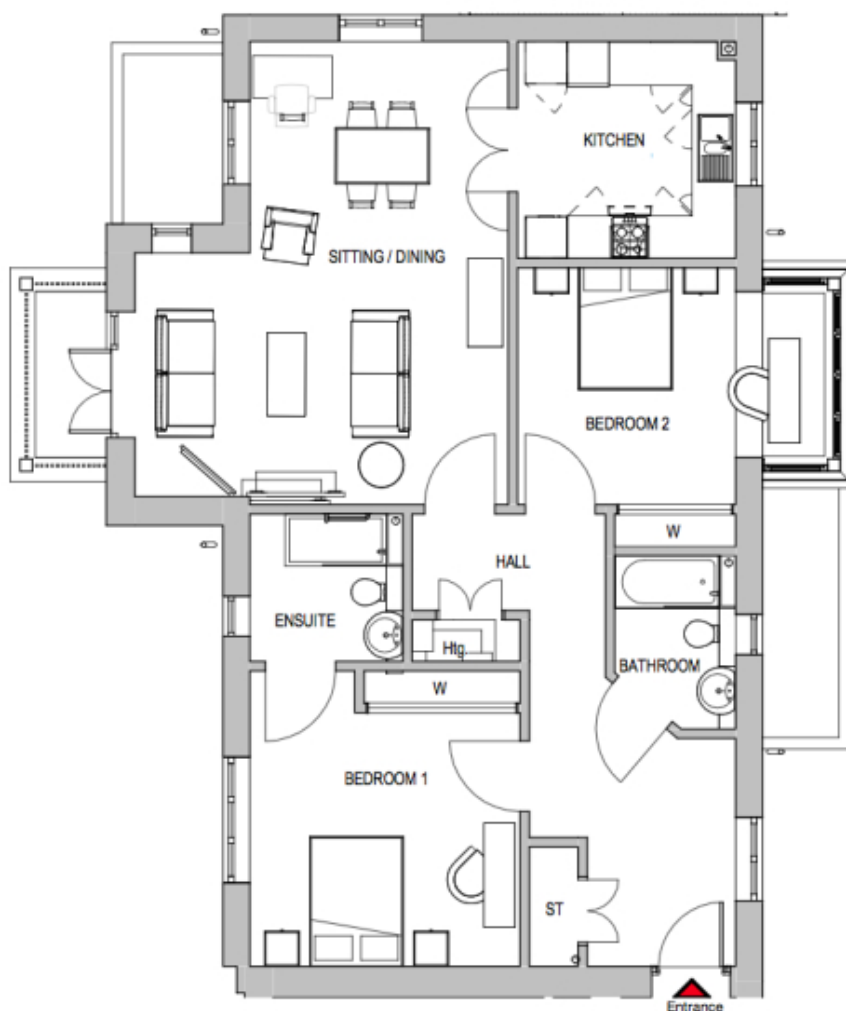


2 Birch Place

A beautiful modern home



Price: £POA*, First floor

This beautiful apartment features a versatile open-plan living space adjacent to the fully equipped kitchen. An ensuite master bedroom is supplemented by a second double bedroom and separate bathroom, giving the flexibility to entertain guests all year round. An entrance with ample storage flows into an interior complete with the very latest fixtures, fittings and appliances.

Internal measurements: 1,098sq ft

Sitting/Dining	21' 10" x 17' 8"	6,653 x 5,364mm
Kitchen	10' 3" x 10' 4"	3,110 x 3,137mm
Bathroom	8' 3" x 5' 9"	2,490 x 1,740mm
Bedroom 1	12' 0" x 12' 9"	3,644 x 3,886mm
Ensuite	6' 11" x 7' 3"	2,100 x 2,200mm
Bedroom 2	11' 2" x 14' 8"	3,400 x 4,459mm

Apart from the fixtures and fittings described, the homes are unfurnished.

* Based on a 125-year lease, and subject to service charge, event fees and ground rent. Please ask for further information.

Version 3 - 19/10/2018

