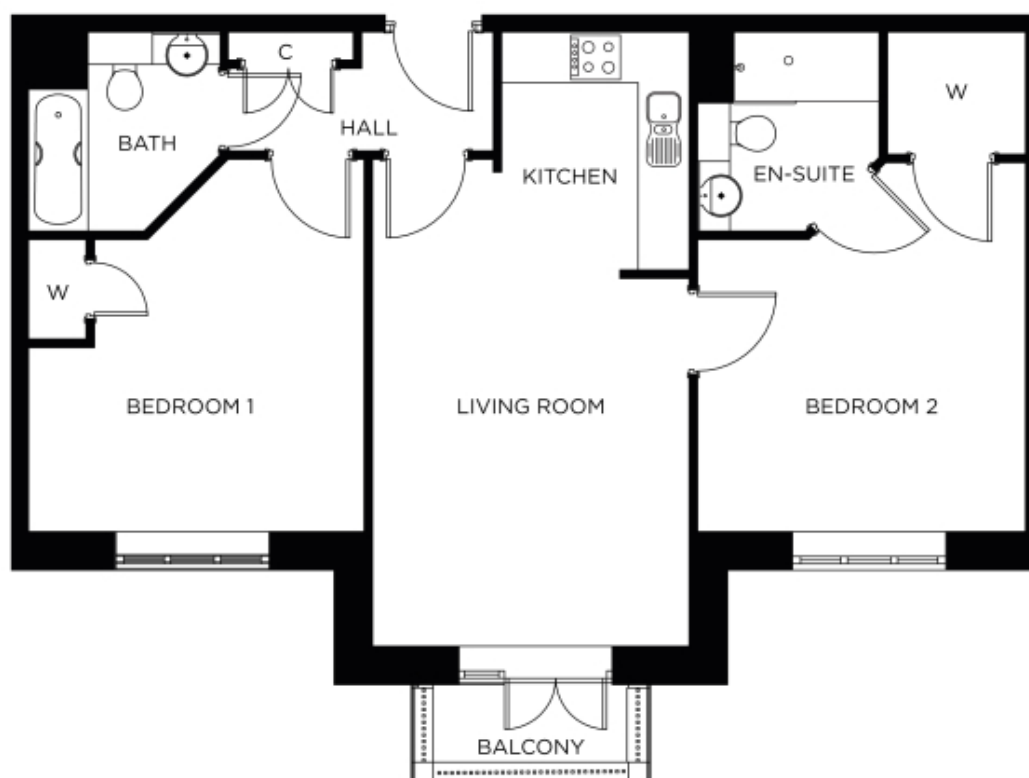


46 The Grange



Price: £399,000*, First floor

Internal measurements: 797sq ft

* other charges apply

Living Room	12' 4" x 18' 10"	3,738 x 5,736mm
Kitchen	7' 8" x 7' 9"	2,313 x 2,350mm
Bedroom 1	12' 8" x 14' 4"	3,850 x 4,366mm
Bathroom	7' 0" x 7' 9"	2,133 x 2,348mm
Bedroom 2	13' 1" x 14' 6"	3,978 x 4,406mm
En-suite	7' 5" x 7' 9"	2,254 x 2,348mm

Apart from the fixtures and fittings described, the homes are unfurnished.

* Based on a 125-year lease, and subject to service charge, event fees and ground rent. Please ask for further information.

Version 3 - 19/10/2018