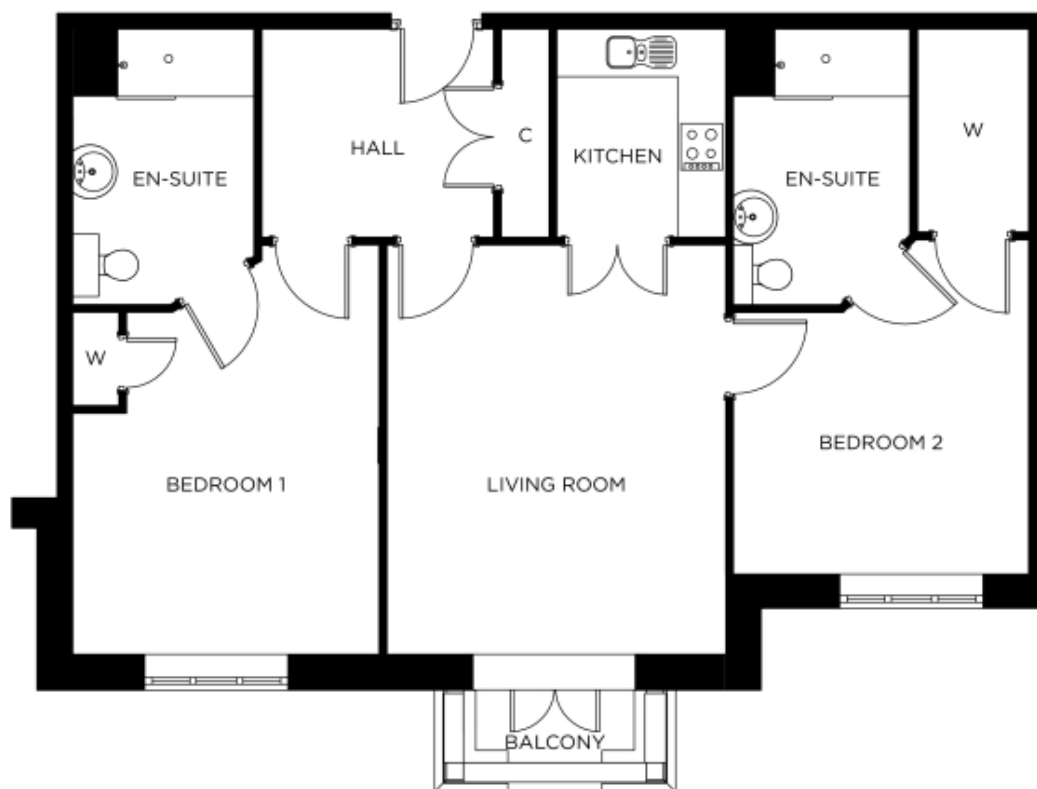


25 The Grange



Price: £475,000*, First floor

* other charges apply

Internal measurements: 904sq ft

Living Room	16' 11" x 14' 1"	5,150 x 4,274mm
Kitchen	8' 9" x 7' 0"	2,646 x 2,118mm
Bedroom 1	17' 0" x 12' 9"	5,165 x 3,882mm
Bedroom 1 En-suite	8' 1" x 7' 6"	2,462 x 2,283mm
Bedroom 2	13' 11" x 12' 4"	4,235 x 3,740mm
Bedroom 2 En-suite	7' 11" x 7' 5"	2,413 x 2,241mm

Apart from the fixtures and fittings described, the homes are unfurnished.

* Based on a 125-year lease, and subject to service charge, event fees and ground rent. Please ask for further information.

Version 3 - 19/10/2018

