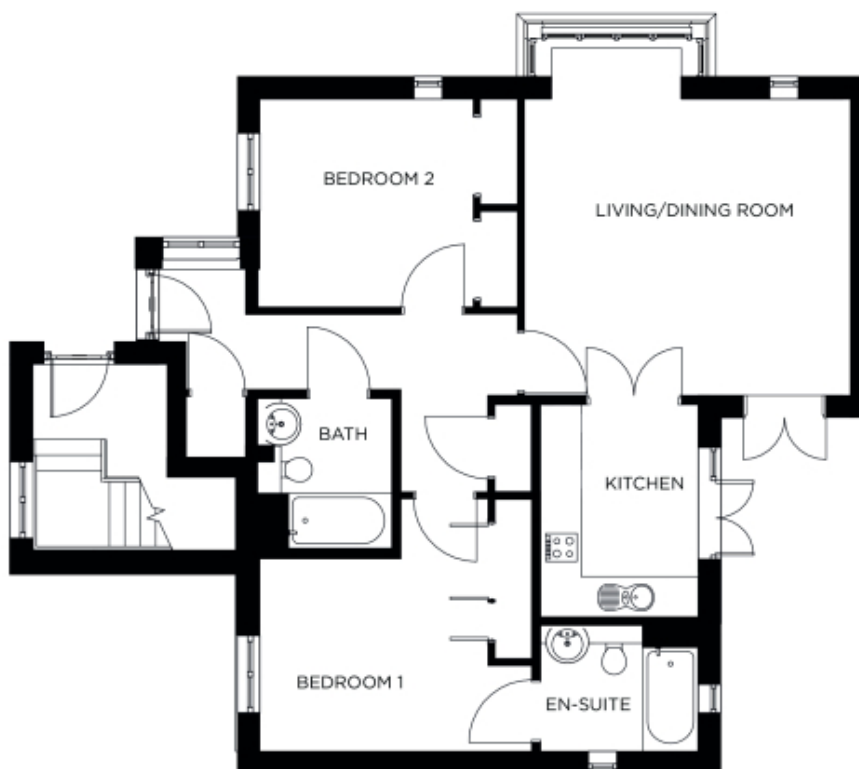


# 2 Beechwood House

A beautiful modern home



## Price: £549,500\*, First floor

This beautifully proportioned apartment features two generous double bedrooms (one en suite) as well as a separate bathroom and integrated storage space throughout. The sizeable open plan living/dining space leads to a modern kitchen, with double doors creating added flexibility. It's the perfect home in which to entertain family and friends all year round.

\* other charges apply

Apart from the fixtures and fittings described, the homes are unfurnished.

\* Based on a 125-year lease, and subject to service charge, event fees and ground rent. Please ask for further information.

Version 3 - 19/10/2018

## Internal measurements: 1,130sq ft

Kitchen	11' 3" x 8' 4"	3,420 x 2,540mm
Living/Dining Room	15' 9" x 17' 4"	4,780 x 5,260mm
Bedroom 1	10' 3" x 12' 1"	3,100 x 3,680mm
Ensuite	7' 2" x 8' 2"	2,160 x 2,470mm
Bedroom 2	11' 4" x 11' 0"	3,440 x 3,350mm
Bathroom	8' 2" x 7' 0"	2,470 x 2,120mm



