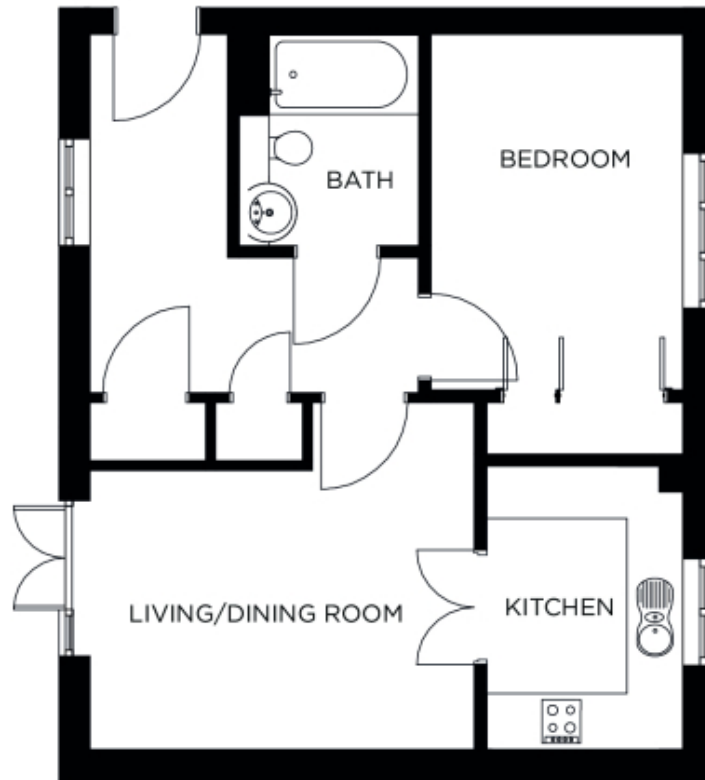


31 Pine Grove

A beautiful modern home



Price: £250,000*, Ground floor

A comfortable home with well-planned spaces. The generous double bedroom and separate bathroom sit opposite a traditional living space and fully equipped kitchen. Clever design and natural light ensure this home makes the most of its space.

* other charges apply

Internal measurements: 624sq ft

Kitchen	7' 4" x 10' 10"	2,230 x 3,300mm
Living/Dining Room	14' 9" x 10' 8"	4,490 x 3,230mm
Bedroom 1	9' 8" x 13' 8"	2,940 x 4,150mm
Bathroom	6' 11" x 8' 2"	2,090 x 2,470mm

Apart from the fixtures and fittings described, the homes are unfurnished.

* Based on a 125-year lease, and subject to service charge, event fees and ground rent. Please ask for further information.

Version 3 - 19/10/2018