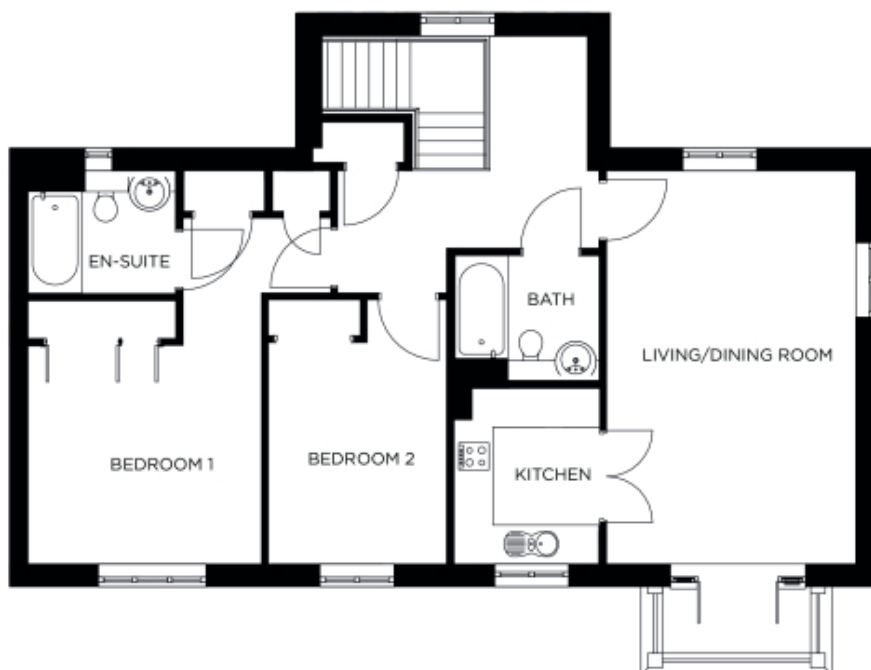


12 Elm House

A beautiful modern home



Price: £598,000*, First floor

This beautifully proportioned apartment features two generous double bedrooms (one en suite) as well as a separate bathroom and integrated storage space throughout. The sizeable open plan living/dining space leads to a modern kitchen, with double doors creating added flexibility. It's the perfect home in which to entertain family and friends all year round.

* other charges apply

Apart from the fixtures and fittings described, the homes are unfurnished.

* Based on a 125-year lease, and subject to service charge, event fees and ground rent. Please ask for further information.

Version 3 - 19/10/2018

Internal measurements: 1,141sq ft

Kitchen	9' 8" x 8' 0"	2,940 x 2,420mm
Living/Dining Room	21' 8" x 13' 9"	6,580 x 4,170mm
Bedroom 1	8' 2" x 6' 9"	2,470 x 2,050mm
Ensuite	6' 9" x 8' 0"	2,040 x 2,430mm
Bedroom 2	8' 10" x 12' 4"	2,680 x 3,750mm
Bathroom	8' 0" x 6' 9"	2,430 x 2,040mm

