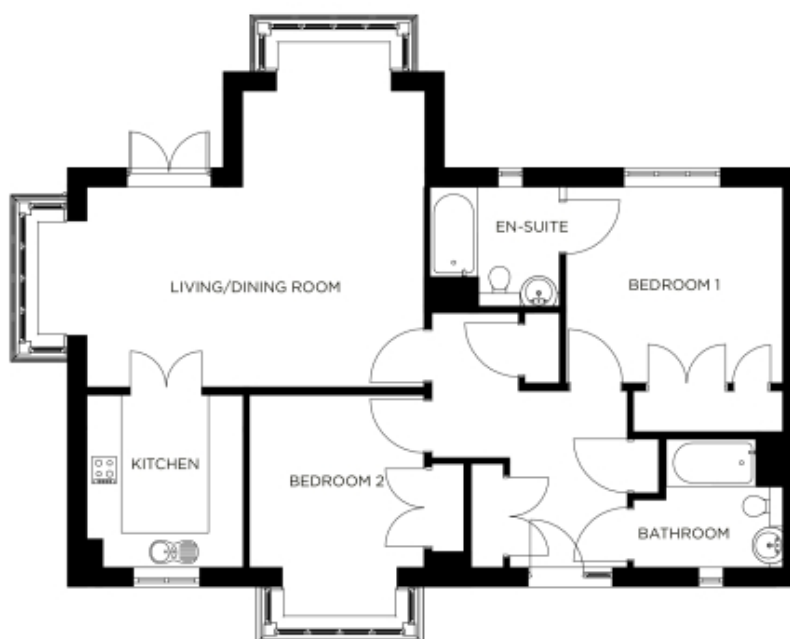


# 18 Sundew Lodge

A beautiful modern home



## Price: £POA\*, Ground floor

This beautiful apartment features a versatile open-plan living space adjacent to the fully equipped kitchen. An en suite master bedroom is supplemented by a second double bedroom and separate bathroom, giving the flexibility to entertain guests all year round. An entrance with ample storage flows into an interior complete with the very latest fixtures, fittings and appliances.

\* other charges apply

Apart from the fixtures and fittings described, the homes are unfurnished.

\* Based on a 125-year lease, and subject to service charge, event fees and ground rent. Please ask for further information.

Version 3 - 19/10/2018

## Internal measurements: 1,152sq ft

Kitchen	9' 8" x 10' 8"	2,940 x 3,240mm
Living/Dining Room	20' 10" x 18' 3"	6,330 x 5,560mm
Bedroom 1	13' 6" x 12' 3"	4,090 x 3,720mm
Ensuite	7' 11" x 7' 5"	2,390 x 2,250mm
Bedroom 2	10' 10" x 10' 8"	3,280 x 3,240mm
Bathroom	7' 3" x 8' 0"	2,200 x 2,420mm



