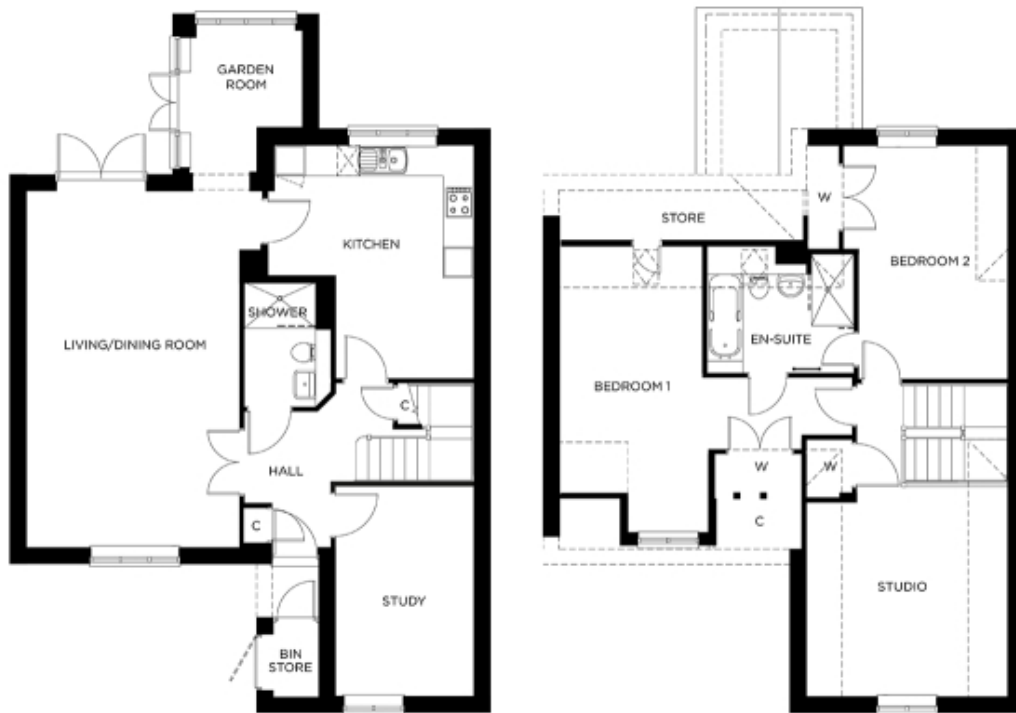


# 18 Great Alne Park

A beautiful modern home



Price: £POA\*

Cleverly arranged over two floors, the Buckingham cottage offers plenty of flexibility to suit your lifestyle. For instance, the downstairs study is close to a wet room, so you could use it as a bedroom for easy ground floor living. Features include a large main reception, fitted kitchen, glazed garden room, two upstairs double bedrooms, a bathroom and a studio room.

Internal measurements: 1,572sq ft

Kitchen	13' 2" x 14' 10"	3,990 x 4,520mm
Living/Dining Room	13' 7" x 22' 9"	4,120 x 6,930mm
Bedroom 1	9' 0" x 15' 9"	2,730 x 4,800mm
Bedroom 2	9' 5" x 14' 10"	2,860 x 4,520mm
Bedroom 3	8' 9" x 13' 3"	2,660 x 4,030mm

Apart from the fixtures and fittings described, the homes are unfurnished.

\* Based on a 125-year lease, and subject to service charge, event fees and ground rent. Please ask for further information.

Version 3 - 19/10/2018



PLEASE NOTE: Images are for illustrative purposes only, Rooms shown may not be representative of this property.