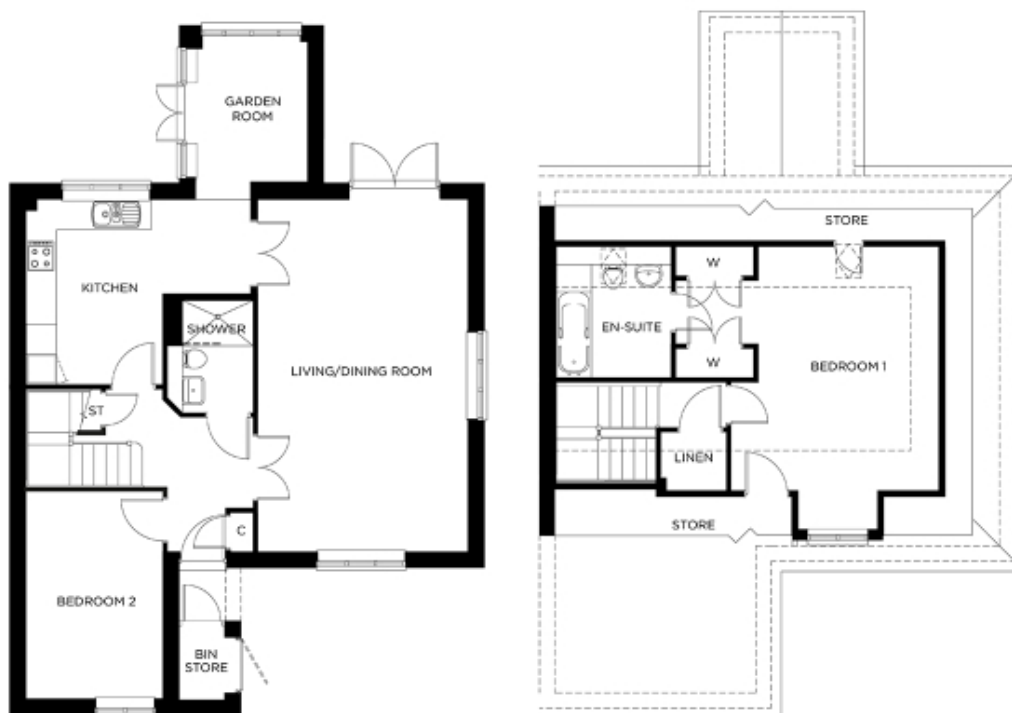


48 Great Alne Park

A beautiful modern home



Price: £581,500*

Albany cottage has character, charm and is designed for flexibility. It has an exceptionally spacious main reception for living and dining, a separate fitted kitchen and a glazed garden room. There is also a study and nearby wet room that together provide flexibility for ground floor living. On the first floor is a large double bedroom with en-suite bathroom and generous in-built storage.

* other charges apply

Apart from the fixtures and fittings described, the homes are unfurnished.

* Based on a 125-year lease, and subject to service charge, event fees and ground rent. Please ask for further information.

Version 3 - 19/10/2018

Internal measurements: 1,216sq ft

Kitchen	8' 9" x 11' 7"	2,660 x 3,510mm
Living/Dining Room	13' 7" x 22' 9"	4,120 x 6,930mm
Bedroom 1	13' 5" x 15' 9"	4,080 x 4,780mm
Bedroom 2	8' 9" x 13' 3"	2,660 x 4,030mm



PLEASE NOTE: Images are for illustrative purposes only, Rooms shown may not be representative of this property.