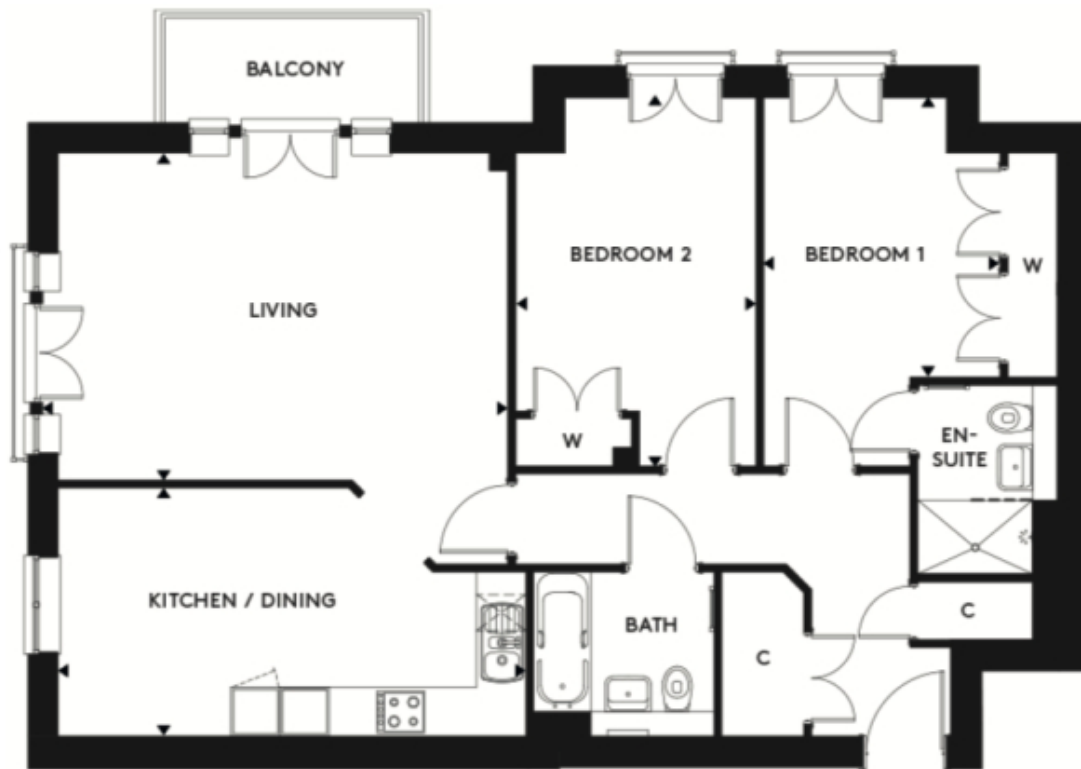


6 Millway Lodge - Offers Over



Price: £450,000*, First floor

Internal measurements: 949sq ft

* other charges apply

Kitchen	8' 6" x 17' 0"	2,580 x 5,160mm
Living/Dining	19' 9" x 20' 7"	6,010 x 6,260mm
Bedroom 1	13' 11" x 9' 9"	4,220 x 2,950mm
Bedroom 2	9' 6" x 14' 7"	2,880 x 4,440mm

Apart from the fixtures and fittings described, the homes are unfurnished.

* Based on a 125-year lease, and subject to service charge, event fees and ground rent. Please ask for further information.

Version 3 - 19/10/2018