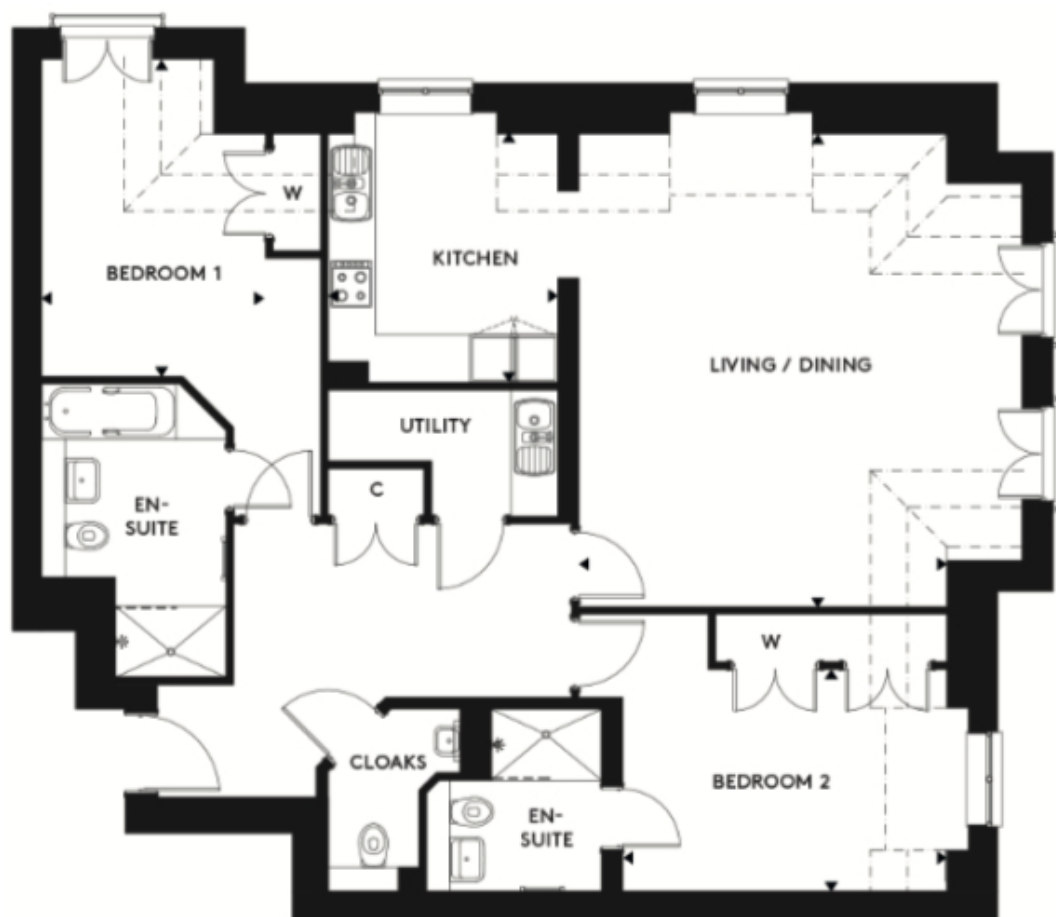


74 Great Alne Park

A beautiful modern home



Price: £POA*, Second floor

Apartments in Theodore House are all configured to be slightly different. Each comprises two bedrooms, one with an en-suite bathroom, a fitted kitchen and a fitted bathroom. Some have separate living/dining rooms while others have open plan kitchen/diners. The flexibility gives you freedom to choose a layout that best fits with the way you like things to be.

Internal measurements: 1,189sq ft

Kitchen	9' 5" x 10' 2"	2,860 x 3,090mm
Living/Dining	15' 2" x 19' 6"	4,610 x 5,940mm
Bedroom 1	9' 2" x 13' 0"	2,790 x 3,960mm
Bedroom 2	13' 4" x 9' 1"	4,060 x 2,750mm

Apart from the fixtures and fittings described, the homes are unfurnished.

* Based on a 125-year lease, and subject to service charge, event fees and ground rent. Please ask for further information.

Version 3 - 19/10/2018



PLEASE NOTE: Images are for illustrative purposes only, Rooms shown may not be representative of this property.