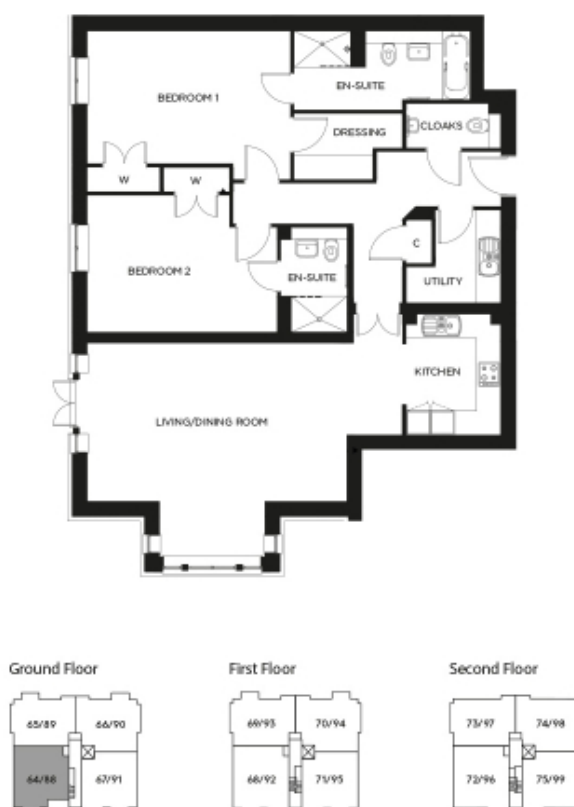


88 Great Alne Park

A beautiful modern home



Price: £POA*, Ground floor

Boasting impressive views over the feature garden and landscaped grounds, Austin House occupies a prominent position â “ hard to miss as you enter the village. The buildingâ™s architecture is inspired by that of the local area and offers a variety of spacious two bedroom apartments complete with ensuites to the master bedrooms.

Internal measurements: 1,247sq ft

Kitchen	7' 7" x 9' 9"	2,300 x 2,950mm
Living/Dining Room	21' 1" x 12' 10"	6,410 x 3,890mm
Bedroom 1	16' 5" x 10' 8"	5,000 x 3,230mm
Bedroom 2	15' 4" x 11' 0"	4,670 x 3,350mm

Apart from the fixtures and fittings described, the homes are unfurnished.

* Based on a 125-year lease, and subject to service charge, event fees and ground rent. Please ask for further information.

Version 3 - 19/10/2018



PLEASE NOTE: Images are for illustrative purposes only, Rooms shown may not be representative of this property.