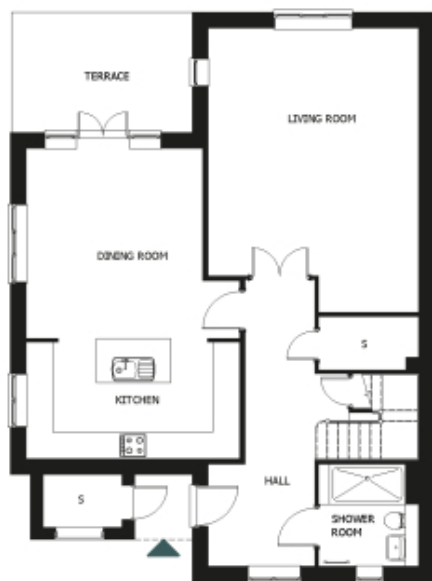


62 Woodland Drive

A beautiful modern home



Price: £820,000*

This beautiful cottage features a versatile living space adjacent to the fully equipped open-plan kitchen diner. An en suite master bedroom is supplemented by a second double bedroom and separate bathroom, giving the flexibility to entertain guests all year round. An entrance with ample storage flows into an interior complete with the very latest fixtures, fittings and appliances.

* Other charges apply. As per the particulars of the properties described, the homes are unfurnished.

* Based on a 125-year lease, and subject to service charge, event fees and ground rent. Please ask for further information.

Version 3 - 19/10/2018

Internal measurements: 1,732sq ft

Living	15' 6" x 18' 3"	4,720 x 5,550mm
Kitchen	15' 9" x 8' 7"	4,790 x 2,610mm
Dining	13' 1" x 14' 0"	3,980 x 4,250mm
Bedroom 1	12' 6" x 18' 3"	3,790 x 5,550mm
Bedroom 2	15' 9" x 15' 8"	4,790 x 4,750mm
Ensuite 1	8' 7" x 6' 8"	2,600 x 2,010mm
Bath 3	11' 0" x 6' 7"	3,340 x 2,000mm
Shower	7' 5" x 7' 7"	2,240 x 2,290mm
Patio	13' 4" x 8' 11"	4,050 x 2,700mm