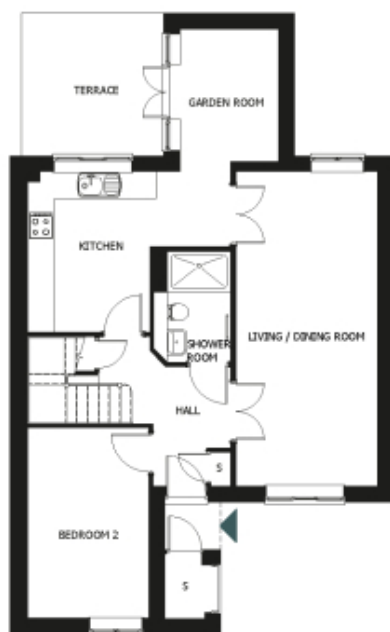


50 Woodland Drive

A beautiful modern home



Price: £POA*

This beautiful cottage features a versatile open-plan living space adjacent to the fully equipped kitchen. An en suite master bedroom is supplemented by a second double bedroom and separate shower-room, giving the flexibility to entertain guests all year round. An entrance with ample storage flows into an interior complete with the very latest fixtures, fittings and appliances.

* other charges apply

Apart from the fixtures and fittings described, the homes are unfurnished.

* Based on a 125-year lease, and subject to service charge, event fees and ground rent. Please ask for further information.

Version 3 - 19/10/2018

Internal measurements: 1,191sq ft

Living	0' 0" x 0' 0"	0 x 0mm
Kitchen	0' 0" x 0' 0"	0 x 0mm
Bedroom 1	0' 0" x 0' 0"	0 x 0mm
Bedroom 2	0' 0" x 0' 0"	0 x 0mm
Bath 3	0' 0" x 0' 0"	0 x 0mm
Shower	0' 0" x 0' 0"	0 x 0mm
Garden Room	0' 0" x 0' 0"	0 x 0mm
Patio	0' 0" x 0' 0"	0 x 0mm