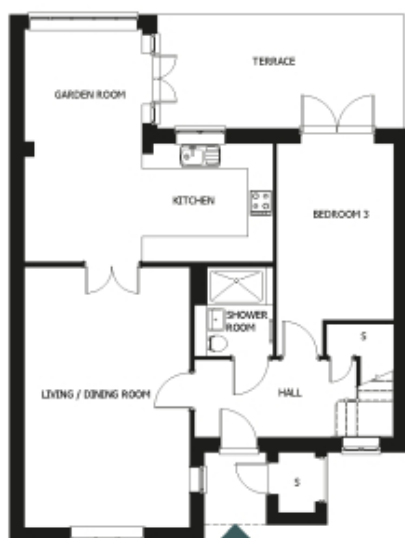


# 39 Woodland Drive

A beautiful modern home



Price: £727,500\*

This beautiful house features a versatile open-plan living space next to the fully equipped kitchen. An en suite master bedroom is supplemented by a second en suite double bedroom, third bedroom and separate shower-room, giving the flexibility to entertain guests all year round. An entrance with ample storage flows into an interior complete with the very latest fixtures, fittings and appliances.

\*Applies to homes with the features described, the homes are unfurnished.

\* Based on a 125-year lease, and subject to service charge, event fees and ground rent. Please ask for further information.

Version 3 - 19/10/2018

Internal measurements: 1,485sq ft

Living	12' 10" x 20' 3"	3,910 x 6,170mm
Kitchen	19' 4" x 9' 3"	5,890 x 2,800mm
Bedroom 1	12' 11" x 15' 10"	3,930 x 4,820mm
Bedroom 2	15' 9" x 9' 11"	4,780 x 3,010mm
Bedroom 3	9' 1" x 13' 9"	2,760 x 4,170mm
Ensuite 1	7' 5" x 8' 3"	2,260 x 2,500mm
Ensuite 2	4' 11" x 10' 1"	1,490 x 3,070mm
Shower	6' 2" x 6' 11"	1,860 x 2,100mm
Garden Room	9' 2" x 9' 3"	2,790 x 2,800mm
Patio	19' 3" x 8' 11"	5,850 x 2,700mm