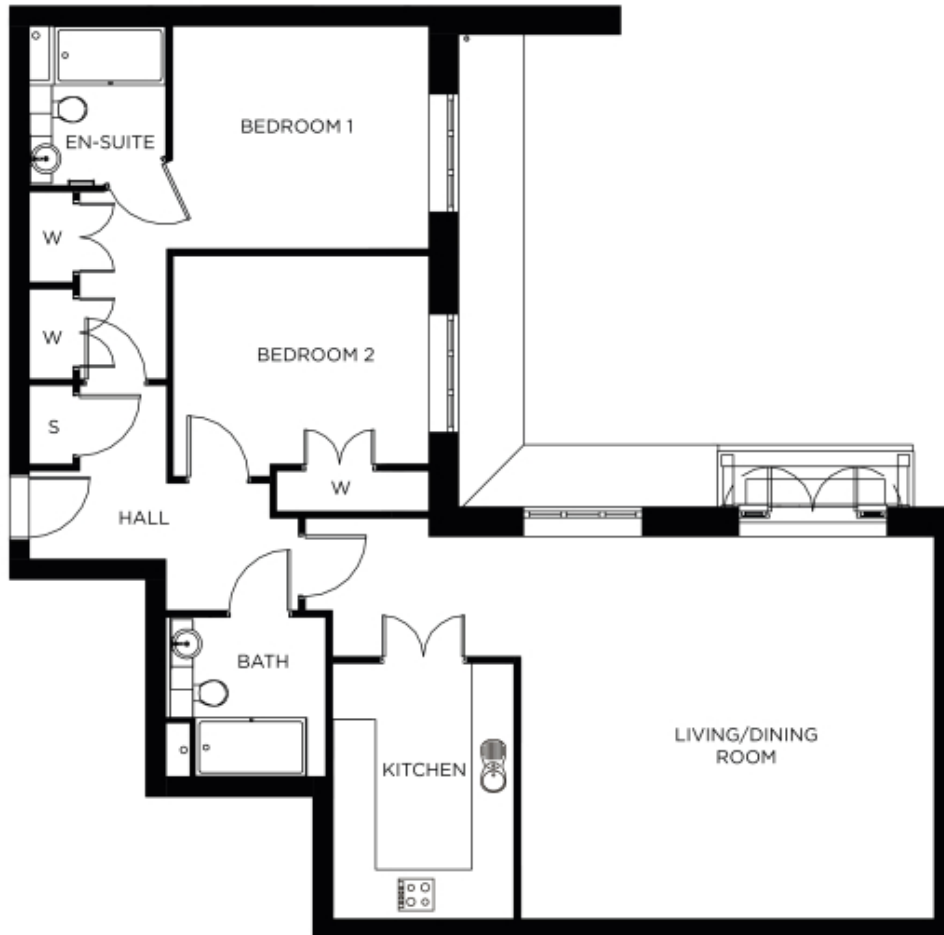


# 23 The Grange

A beautiful modern home



## Price: £POA\*, First floor

At the heart of the village, the two Christie apartments boast large, versatile living space with a self-contained kitchen, two bedrooms and two bathrooms. Enjoy all the benefits of living in the heart of the vibrant village centre, with no compromise on living space.

\* other charges apply

## Internal measurements: 1,184sq ft

Kitchen	12' 10" x 9' 2"	3,888 x 2,771mm
Living/Dining	20' 9" x 19' 2"	6,304 x 5,820mm
Bedroom 1	11' 2" x 12' 11"	3,399 x 3,912mm
Bedroom 2	12' 10" x 11' 1"	3,896 x 3,363mm
Bathroom	8' 1" x 8' 0"	2,445 x 2,435mm
En-suite 1	8' 0" x 6' 10"	2,430 x 2,080mm
Store 1	4' 0" x 2' 3"	1,200 x 668mm



PLEASE NOTE: Images are for illustrative purposes only. Rooms shown may not be representative of this property.