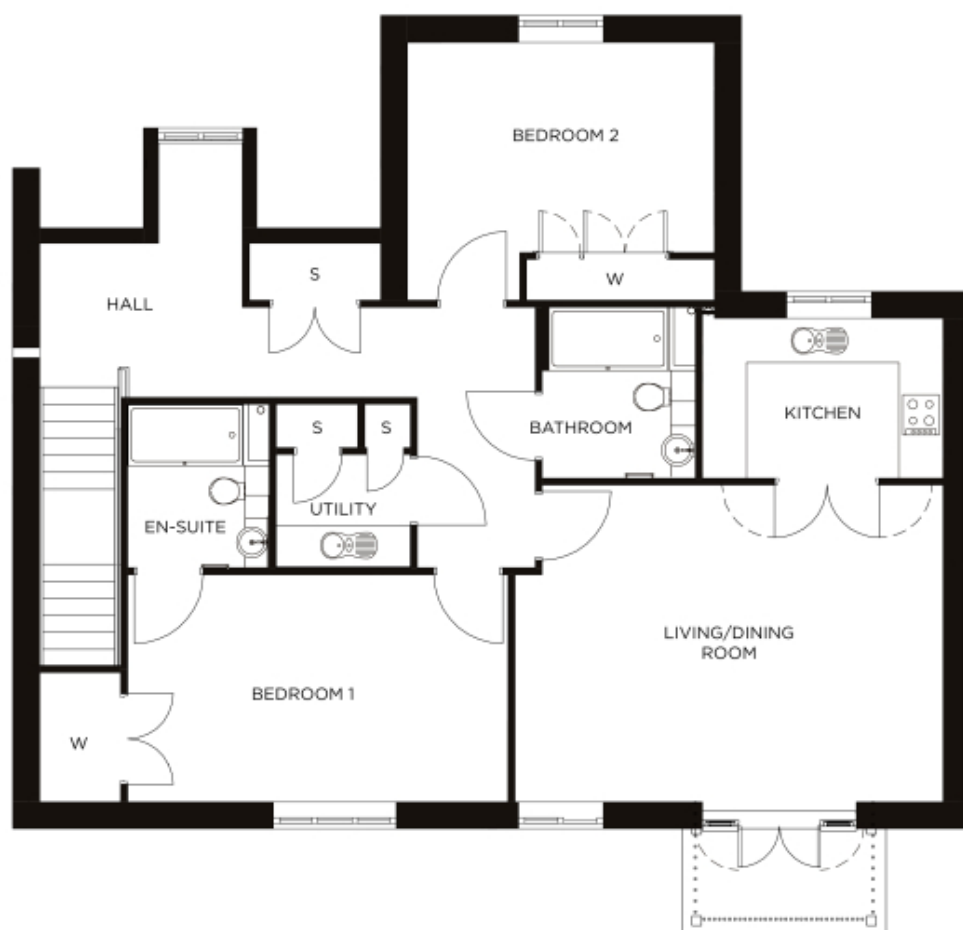


61 Wykeham Manor

A beautiful modern home



Price: £747,000*, First floor

This sizeable apartment enjoys a versatile open-plan living area and large self-contained kitchen. The master bedroom benefits from built-in wardrobes and en-suite, whilst the second double bedroom and separate bathroom are further examples of the enviable space.

* other charges apply

Internal measurements: 1,356sq ft

Kitchen	11' 8" x 7' 9"	3,538 x 2,346mm
Living/Dining	20' 8" x 15' 4"	6,291 x 4,650mm
Bedroom 1	14' 10" x 12' 6"	4,509 x 3,786mm
Bedroom 2	18' 4" x 11' 0"	5,584 x 3,335mm
Bathroom	8' 3" x 7' 5"	2,511 x 2,252mm
En-suite 1	7' 11" x 6' 10"	2,400 x 2,080mm
Store 1	4' 0" x 2' 2"	1,200 x 637mm
Store 2	2' 3" x 2' 2"	674 x 637mm
Cloak room	6' 6" x 5' 6"	1,974 x 1,663mm



PLEASE NOTE: Images are for illustrative purposes only. Rooms shown may not be representative of this property.