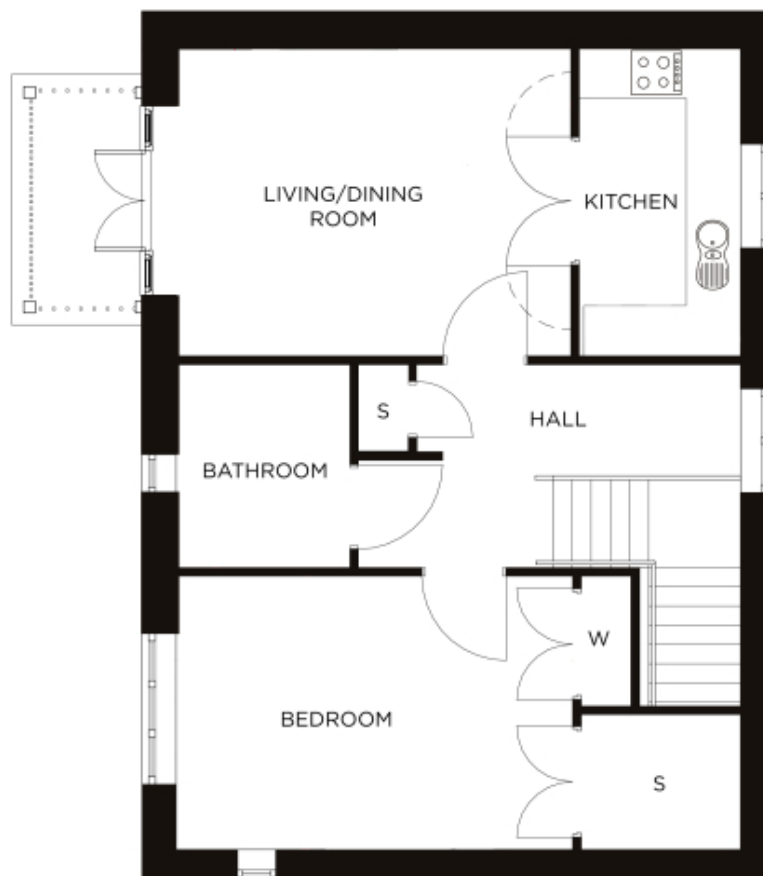


# 63 Wykeham Manor

A beautiful modern home



## Price: £POA\*, First floor

There are two delightful, one-bedroom Wignall apartments, and both feature versatile open-plan living space adjacent to the self-contained kitchen. Enjoy easy access to the village centre with either a ground- or first-floor property.

## Internal measurements: 786sq ft

|               |                 |                 |
|---------------|-----------------|-----------------|
| Living/Dining | 15' 7" x 12' 3" | 4,725 x 3,731mm |
| Bedroom 1     | 15' 7" x 10' 9" | 4,748 x 3,271mm |
| Bathroom      | 8' 0" x 6' 10"  | 2,430 x 2,080mm |
| Store 1       | 3' 5" x 2' 0"   | 1,040 x 600mm   |
| Kitchen       | 12' 3" x 6' 5"  | 3,731 x 1,934mm |



