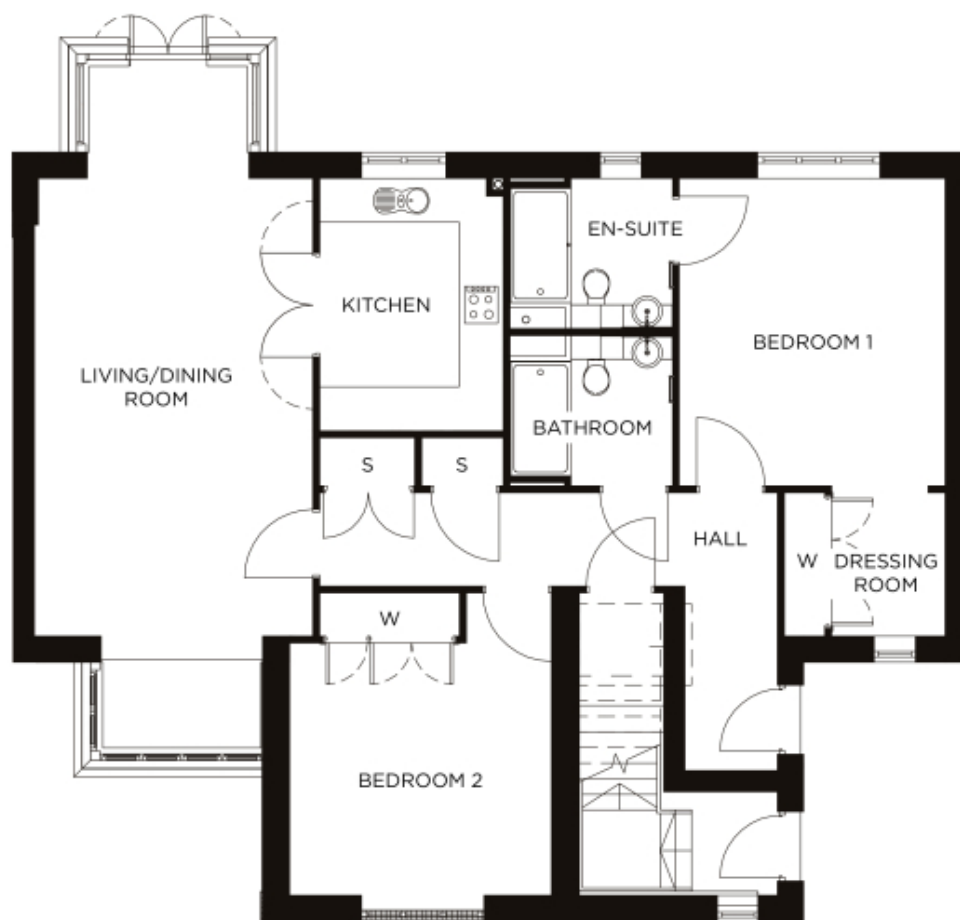


64 Arch Vale

A beautiful modern home



Price: £POA*, Ground floor

There are two impressive Bronte apartments, both with dual aspect living/dining room and adjacent self-contained kitchen. The master bedroom benefits from a walk-in wardrobe and en-suite, whilst the second double bedroom and separate bathroom are further examples of the enviable space.

Internal measurements: 1,335sq ft

Kitchen	12' 3" x 8' 11"	3,731 x 2,713mm
Living/Dining	22' 3" x 13' 7"	6,759 x 4,116mm
Bedroom 1	14' 11" x 12' 11"	4,541 x 3,926mm
Bedroom 2	14' 8" x 12' 9"	4,463 x 3,870mm
Bathroom	7' 11" x 7' 4"	2,402 x 2,221mm
En-suite 1	7' 11" x 7' 4"	2,402 x 2,220mm
Store 1	4' 8" x 2' 4"	1,408 x 710mm
Store 2	4' 0" x 2' 4"	1,205 x 710mm
Dressing room 1	7' 0" x 5' 6"	2,118 x 1,675mm



PLEASE NOTE: Images are for illustrative purposes only. Rooms shown may not be representative of this property.