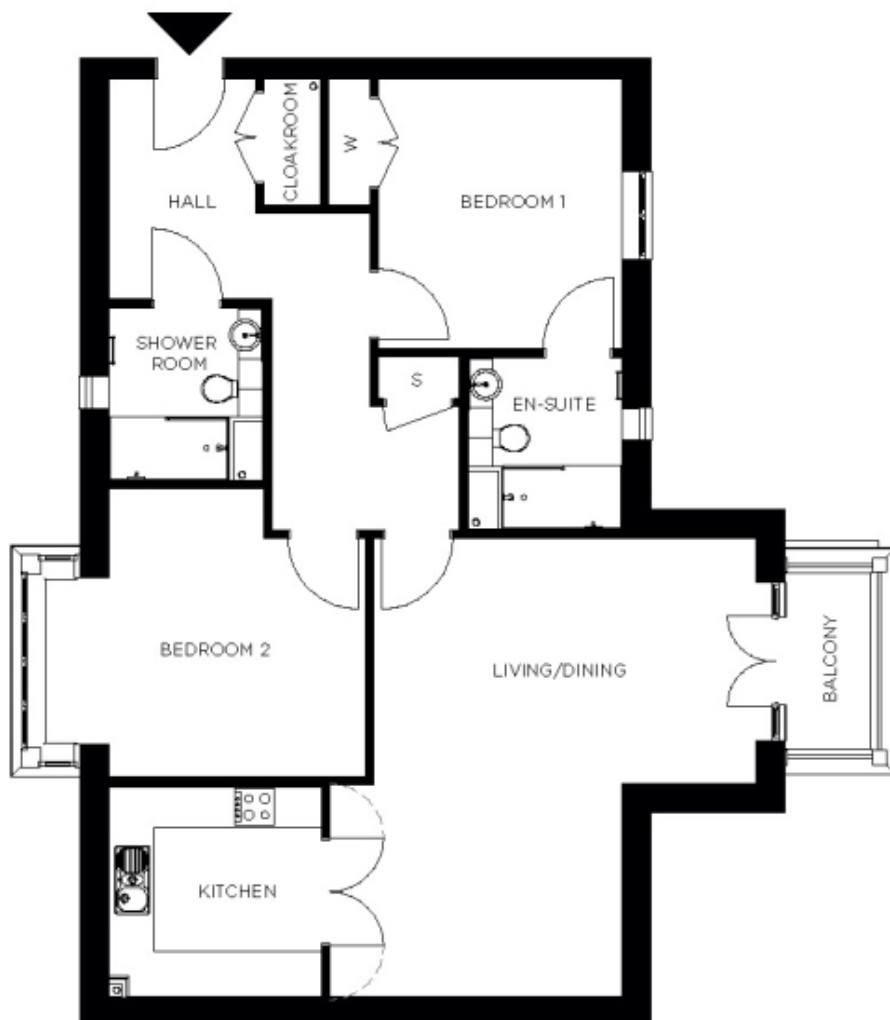


81 Harewood House



Price: £POA*, Second floor

This beautiful apartment features a versatile open-plan living space adjacent to the fully equipped kitchen. An en suite master bedroom is supplemented by a second double bedroom and separate bathroom, giving the flexibility to entertain guests all year round. An entrance with ample storage flows into an interior complete with the very latest fixtures, fittings and appliances.

* other charges apply

Internal measurements: 1,133sq ft

Living	18' 0" x 21' 3"	5,484 x 6,457mm
Kitchen	10' 0" x 9' 11"	3,045 x 3,010mm
Hallway	12' 4" x 14' 8"	3,741 x 4,464mm
Bedroom 1	11' 8" x 12' 7"	3,544 x 3,815mm
Wardrobe	2' 0" x 5' 11"	600 x 1,780mm
Ensuite 1	7' 3" x 8' 1"	2,203 x 2,447mm
Bedroom 2	15' 3" x 13' 0"	4,627 x 3,940mm
Shower	7' 3" x 8' 1"	2,200 x 2,448mm
Store	3' 10" x 1' 11"	1,166 x 571mm
Balcony	4' 1" x 8' 7"	1,226 x 2,608mm



PLEASE NOTE: Images are for illustrative purposes only. Rooms shown may not be representative of this property.