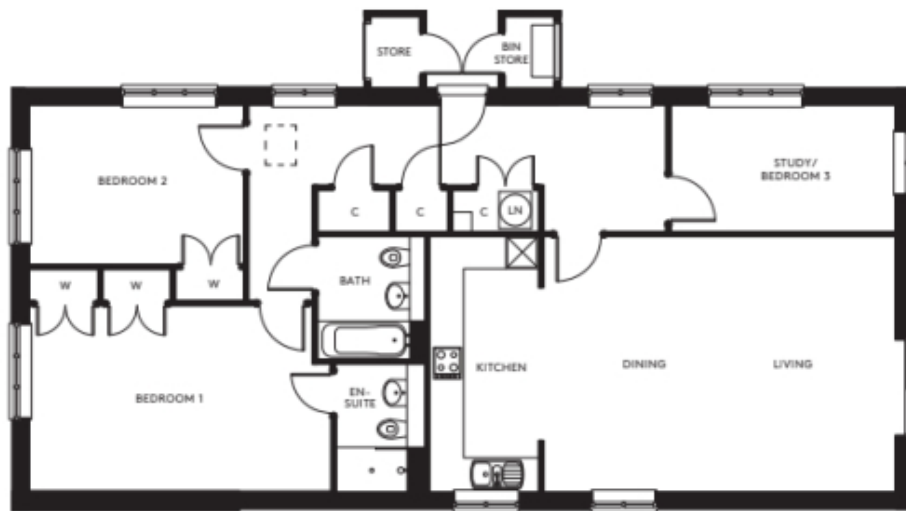


11 Teal Way



Price: £599,000*, Ground floor

Internal measurements: 1,217sq ft

* other charges apply

Sitting/Dining Room	21' 3" x 15' 5"	6,460 x 4,680mm
Kitchen	6' 6" x 15' 5"	1,980 x 4,680mm
Study	13' 6" x 7' 7"	4,110 x 2,290mm
Reception Room	13' 7" x 7' 7"	4,140 x 2,300mm
Bedroom 1	18' 2" x 11' 2"	5,530 x 3,390mm
Bedroom 2	12' 11" x 9' 7"	3,930 x 2,900mm

Apart from the fixtures and fittings described, the homes are unfurnished.

* Based on a 125-year lease, and subject to service charge, event fees and ground rent. Please ask for further information.

Version 3 - 19/10/2018



PLEASE NOTE: Images are for illustrative purposes only. Rooms shown may not be representative of this property.