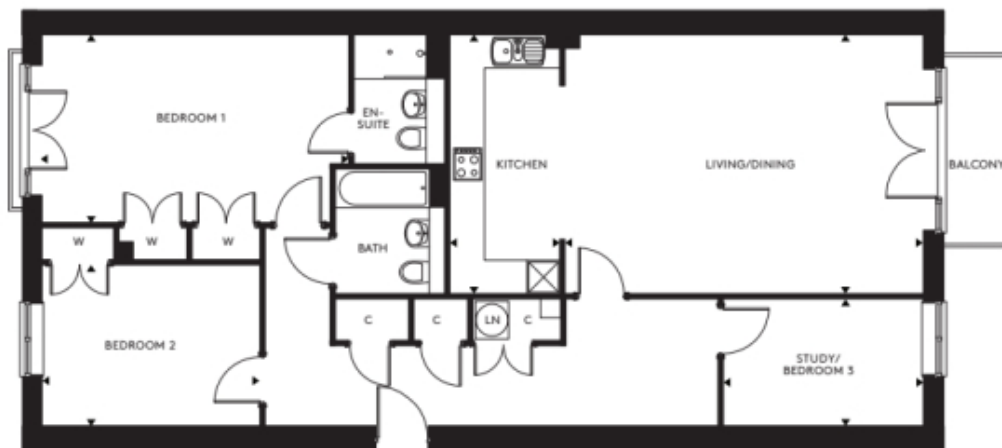


19 Buller House

A beautiful modern home



Price: £POA*, First floor

Internal measurements: 1,215sq ft

Located on the corner of the village with lovely views in every direction, Buller House offers a choice of different layouts for one and two bedroom apartments. Each layout features a fitted kitchen with a spacious living/dining room and private balcony or patio.

Apart from the fixtures and fittings described, the homes are unfurnished.

* Based on a 125-year lease, and subject to service charge, event fees and ground rent. Please ask for further information.

Version 3 - 19/10/2018



PLEASE NOTE: Images are for illustrative purposes only. Rooms shown may not be representative of this property.