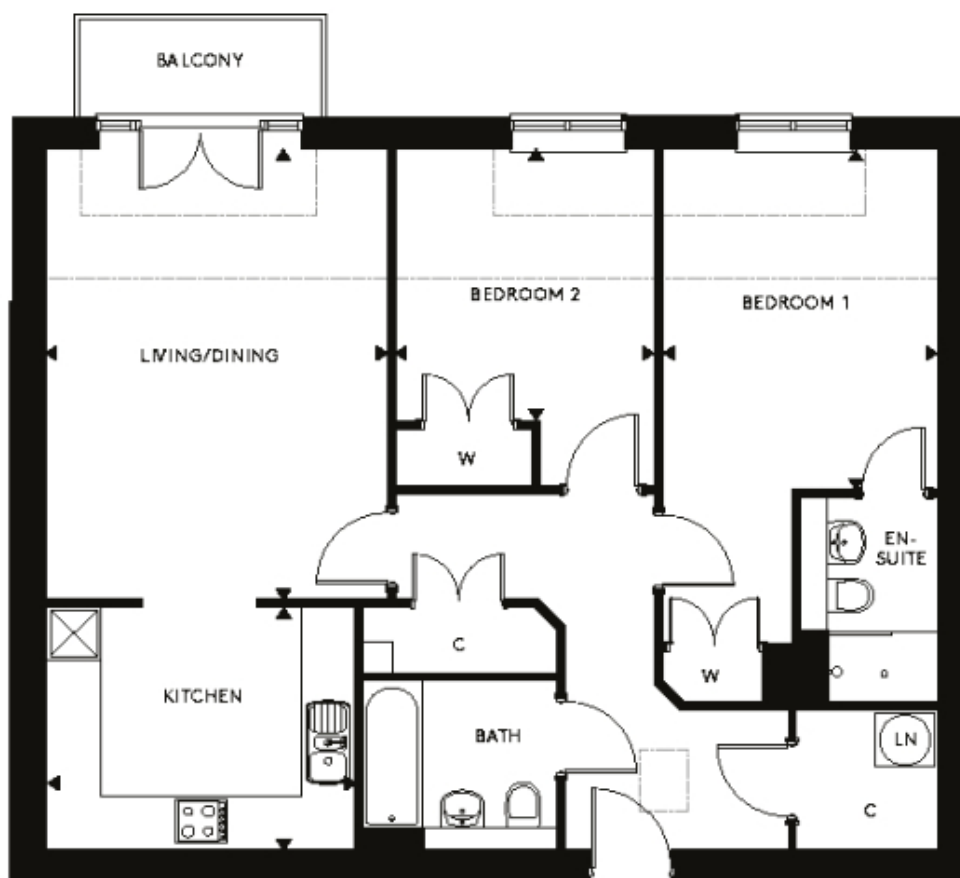


65 Millbrook Village

A beautiful modern home



Price: £POA*, Second floor

Located on the corner of the village with lovely views in every direction, Buller House offers a choice of different layouts for one and two bedroom apartments. Each layout features a fitted kitchen with a spacious living/dining room and private balcony or patio.

Internal measurements: 904sq ft

Sitting/Dining Room	13' 0" x 17' 1"	3,960 x 5,200mm
Kitchen	11' 9" x 9' 2"	3,560 x 2,790mm
Bedroom 1	10' 6" x 12' 11"	3,190 x 3,930mm
Bedroom 2	9' 10" x 10' 4"	2,980 x 3,130mm

Apart from the fixtures and fittings described, the homes are unfurnished.

* Based on a 125-year lease, and subject to service charge, event fees and ground rent. Please ask for further information.

Version 3 - 19/10/2018



PLEASE NOTE: Images are for illustrative purposes only. Rooms shown may not be representative of this property.