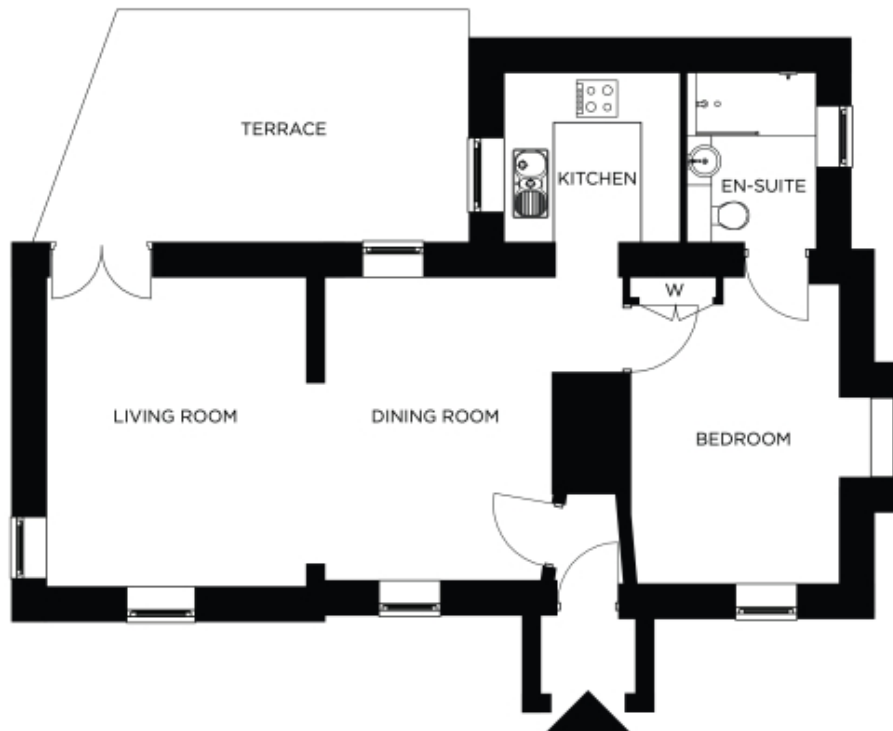


# Fairfield Lodge



Price: £POA\*, Ground floor

Internal measurements: 637sq ft

Discover tranquillity at Fairfield Lodge. This spacious one-bedroom property is generously proportioned, and it boasts a beautiful ensuite bathroom, providing both comfort and convenience. Step into the inviting living and dining area which is perfect for entertaining friends and family. From here, you can seamlessly access the terrace area – a perfect spot for outdoor relaxation and enjoying the beautiful surroundings.

Lodge Internal Area â “ 59.2m<sup>2</sup> (637 sqft)  
External Terrace Area â “ 18.3m<sup>2</sup> (197 sqft)

\* other charges apply

Apart from the fixtures and fittings described, the homes are unfurnished.

\* Based on a 125-year lease, and subject to service charge, event fees and ground rent. Please ask for further information.

Version 3 - 19/10/2018