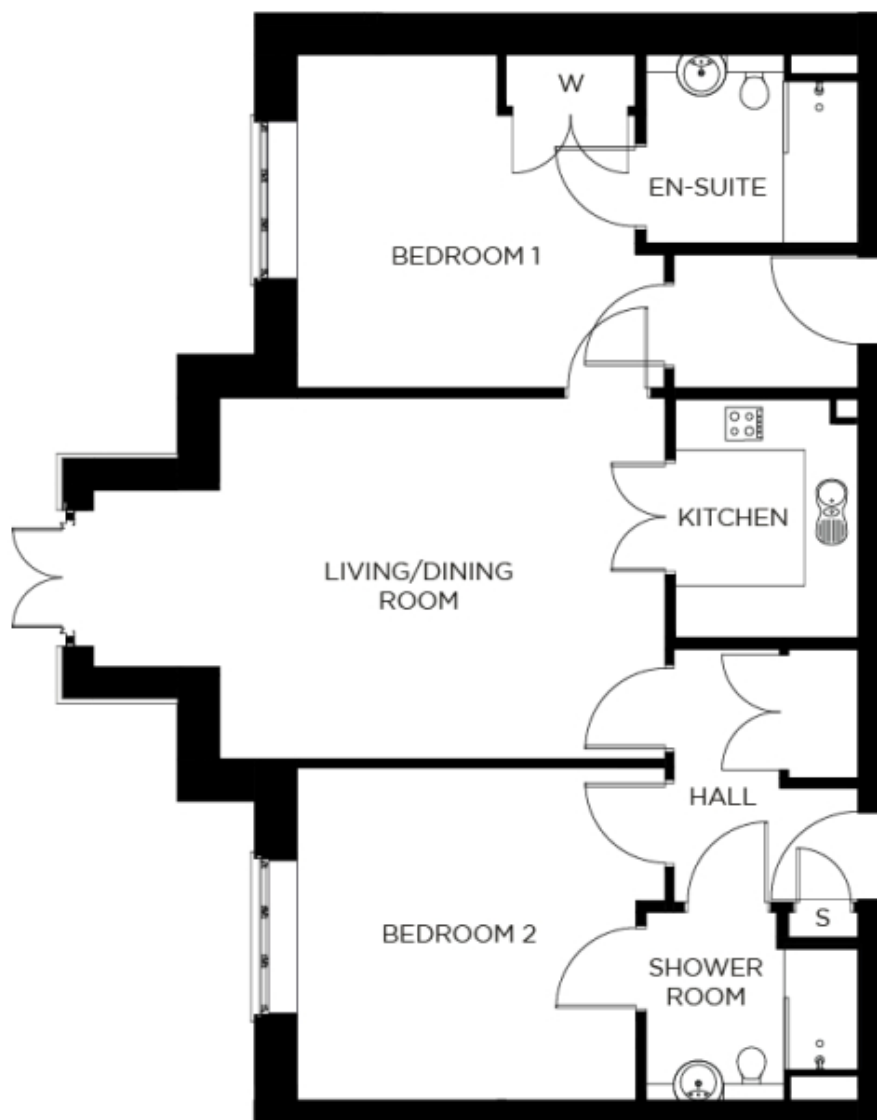


# 6 Burchmore House

A beautiful modern home



## Price: £POA\*, Ground floor floor

Our spacious two-bedroom retirement living apartments offer the perfect balance of style and function, centrally located to ensure easy access to all village facilities.

\* other charges apply

## Internal measurements: 920sq ft

|                    |                 |                 |
|--------------------|-----------------|-----------------|
| Kitchen            | 9' 2" x 7' 0"   | 2,780 x 2,120mm |
| Living/Dining Room | 21' 9" x 13' 9" | 6,610 x 4,190mm |
| Bedroom 1          | 14' 0" x 12' 8" | 4,250 x 3,860mm |
| Ensuite            | 8' 1" x 7' 2"   | 2,450 x 2,180mm |
| Bedroom 2          | 14' 0" x 12' 8" | 4,250 x 3,850mm |
| Shower room        | 8' 1" x 7' 2"   | 2,450 x 2,180mm |

