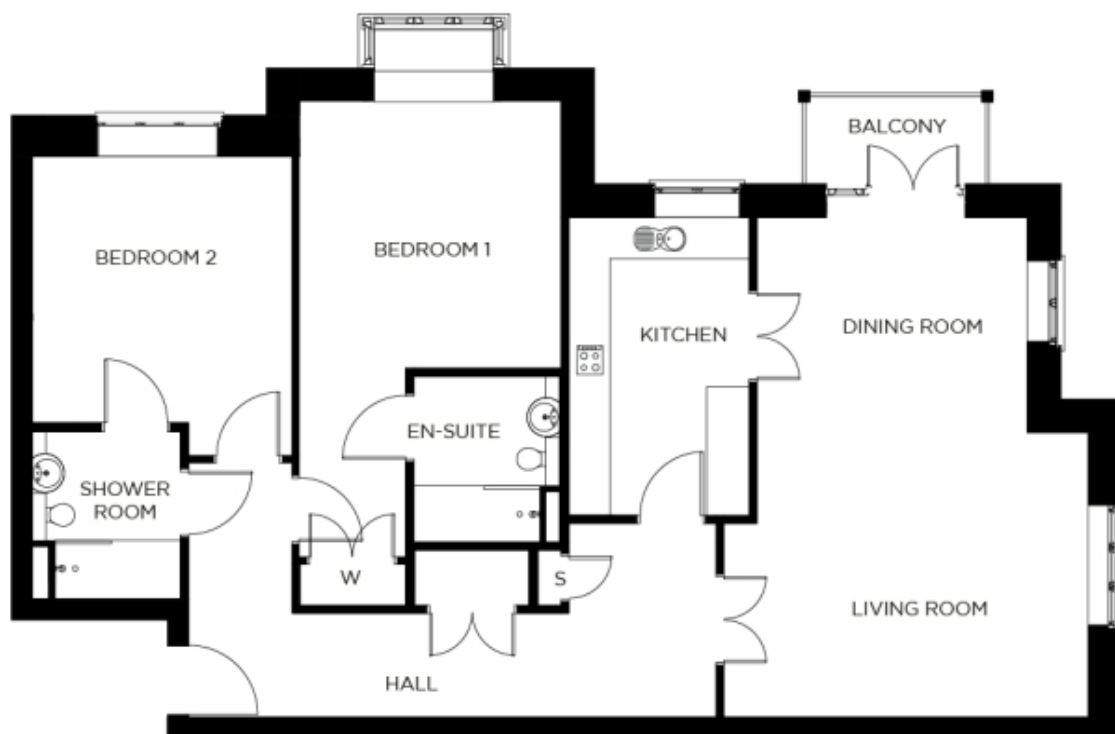


# 29 Burchmore House

A beautiful modern home



## Price: £POA\*, First floor

Our spacious two-bedroom retirement living apartments offer the perfect balance of style and function, centrally located to ensure easy access to all village facilities.

\* other charges apply

## Internal measurements: 1,264sq ft

Kitchen	14' 5" x 8' 9"	4,370 x 2,650mm
Living/Dining Room	24' 1" x 17' 8"	7,340 x 5,370mm
Bedroom 1	24' 4" x 12' 8"	7,410 x 3,860mm
Ensuite	8' 0" x 7' 1"	2,430 x 2,140mm
Bedroom 2	14' 6" x 12' 7"	4,400 x 3,830mm
Shower room	8' 1" x 7' 2"	2,450 x 2,180mm